



SMD3 Monoclonal Antibody

Catalog No	BYmab-04975
Isotype	IgG
Reactivity	Human;Mouse
Applications	WB
Gene Name	SNRPD3
Protein Name	Small nuclear ribonucleoprotein Sm D3 (Sm-D3) (snRNP core protein D3)
Immunogen	Synthesized peptide derived from human protein . at AA range: 30-110
Specificity	SMD3 Monoclonal Antibody detects endogenous levels of protein.
Formulation	Liquid in PBS containing 50% glycerol, and 0.02% sodium azide.
Source	Monoclonal, Mouse,IgG
Purification	The antibody was affinity-purified from mouse antiserum by affinity-chromatography using epitope-specific immunogen.
Dilution	WB 1:500-2000
Concentration	1 mg/ml
Purity	≥90%
Storage Stability	-20°C/1 year
Synonyms	
Observed Band	13kD
Cell Pathway	Cytoplasm, cytosol . Nucleus . SMN-mediated assembly into core snRNPs occurs in the cytosol before SMN-mediated transport to the nucleus to be included in spliceosomes. .
Tissue Specificity	Lung,
Function	disease:In the autoimmune disease systemic lupus erythematosus, antinuclear antibodies are developed with Sm specificity.,PTM:Arg-97 is dimethylated, probably to asymmetric dimethylarginine.,PTM:Methylated on arginine residues by PRMT5 and PRMT7; methylation is required for assembly and biogenesis of snRNPs.,similarity:Belongs to the snRNP core protein family.,subunit:Identified in the spliceosome C complex, at least composed of AQR, ASCC3L1, C19orf29, CDC40, CDC5L, CRNKL1, DDX23, DDX41, DDX48, DDX5, DGCR14, DHX35, DHX38, DHX8, EFTUD2, FRG1, GPATC1, HNRPA1, HNRPA2B1, HNRPA3, HNRPC, HNRPF, HNRPH1, HNRPK, HNRPM, HNRPR, HNRPU, KIAA1160, KIAA1604, LSM2, LSM3, MAGOH, MORG1, MABPC1, PLRG1, PNN, PPIE, PPIL1, PPIL3, PPWD1, PRPF19, PRPF4B, PRPF6, PRPF8, RALY, RBM22,

Nanjing BYabscience technology Co.,Ltd



RBM8A, RBMX, SART1, SF3A1, SF3A2, SF3A3, SF3B1, SF3B2, SF3B3, SFRS1, SKIV2L2, SNRPA1, SNRPB, SNRPB2, SNRPD1, SNRPD2, SNRPD3, SNRPE,

Background

This gene encodes a core component of the spliceosome, which is a nuclear ribonucleoprotein complex that functions in pre-mRNA splicing. Alternative splicing results in multiple transcript variants. [provided by RefSeq, Jul 2013],

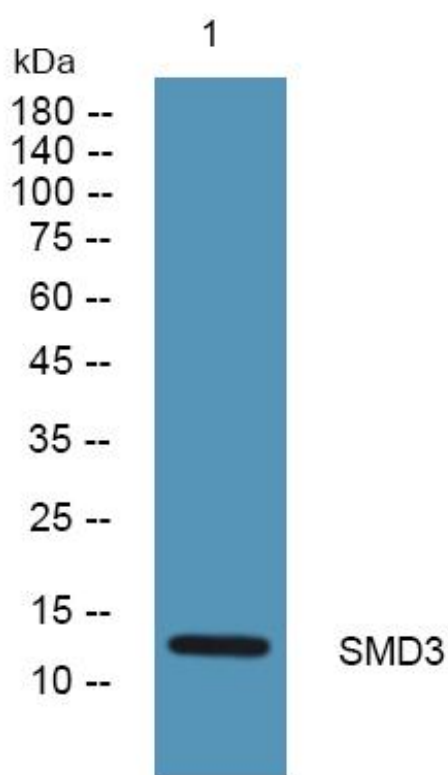
matters needing attention

Avoid repeated freezing and thawing!

Usage suggestions

This product can be used in immunological reaction related experiments. For more information, please consult technical personnel.

Products Images



Western Blot analysis of various cells using SMD3 Monoclonal Antibody