



# AN32D Monoclonal Antibody

Catalog No	BYmab-04964
Isotype	IgG
Reactivity	Human;Rat;Mouse;
Applications	WB
Gene Name	ANP32D PP32R2
Protein Name	Acidic leucine-rich nuclear phosphoprotein 32 family member D (Phosphoprotein 32-related protein 2) (Tumorigenic protein pp32r2)
Immunogen	Synthesized peptide derived from human protein . at AA range: 1-80
Specificity	AN32D Monoclonal Antibody detects endogenous levels of protein.
Formulation	Liquid in PBS containing 50% glycerol, and 0.02% sodium azide.
Source	Monoclonal, Mouse,IgG
Purification	The antibody was affinity-purified from mouse antiserum by affinity-chromatography using epitope-specific immunogen.
Dilution	WB 1:500-2000
Concentration	1 mg/ml
Purity	≥90%
Storage Stability	-20°C/1 year
Synonyms	
Observed Band	14kD
Cell Pathway	nucleus,
Tissue Specificity	Placenta,
Function	similarity:Belongs to the ANP32 family.,similarity:Contains 3 LRR (leucine-rich) repeats.,
Background	Phosphoprotein 32 (PP32) is a tumor suppressor that can inhibit several types of cancers, including prostate and breast cancers. The protein encoded by this gene is one of at least two proteins that are similar in amino acid sequence to PP32 and are part of the same acidic nuclear phosphoprotein gene family. However, unlike PP32, the encoded protein is tumorigenic. The tumor suppressor function of PP32 has been localized to a 25 amino acid region that is absent in the protein encoded by this gene. This gene does not contain introns. [provided by RefSeq, Jul 2008],

Nanjing BYabscience technology Co.,Ltd

网址: [www.njbybio.com](http://www.njbybio.com)

官方热线: 025-5229-8998

监督电话: 15950492658



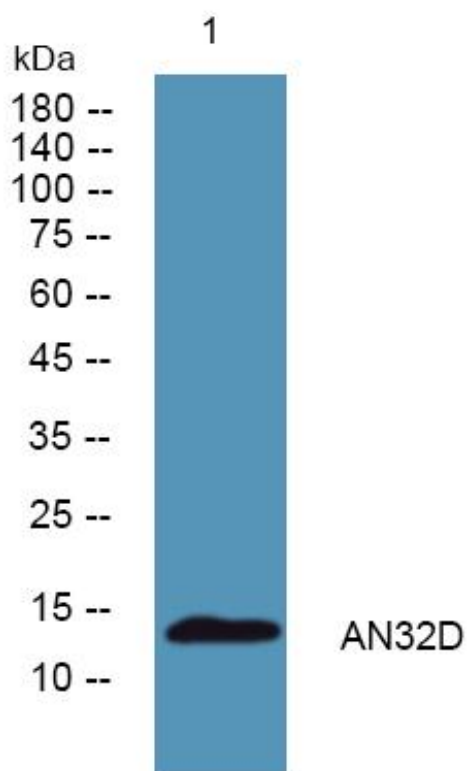
**matters needing attention**

Avoid repeated freezing and thawing!

**Usage suggestions**

This product can be used in immunological reaction related experiments. For more information, please consult technical personnel.

## Products Images



Western Blot analysis of various cells using AN32D Monoclonal Antibody