



KIZ Monoclonal Antibody

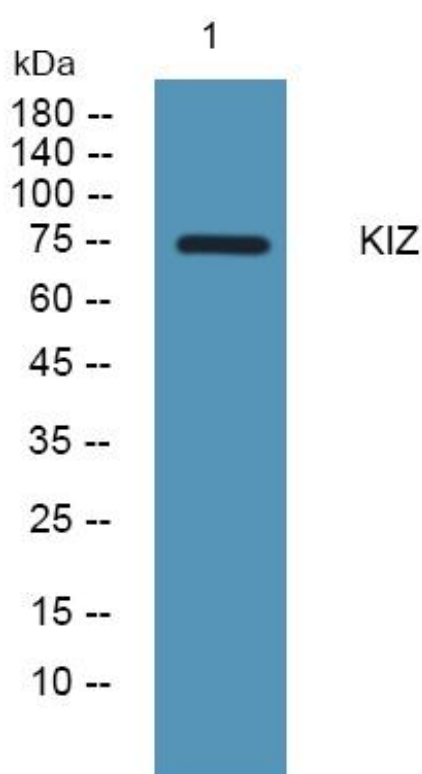
Catalog No	BYmab-04913
Isotype	IgG
Reactivity	Human;Rat;Mouse;
Applications	WB
Gene Name	PLK1S1 C20orf19 KIZ NCRNA00153 HT013
Protein Name	Centrosomal protein kizuna (Polo-like kinase 1 substrate 1)
Immunogen	Synthesized peptide derived from human protein . at AA range: 320-400
Specificity	KIZ Monoclonal Antibody detects endogenous levels of protein.
Formulation	Liquid in PBS containing 50% glycerol, and 0.02% sodium azide.
Source	Monoclonal, Mouse,IgG
Purification	The antibody was affinity-purified from mouse antiserum by affinity-chromatography using epitope-specific immunogen.
Dilution	WB 1:500-2000
Concentration	1 mg/ml
Purity	≥90%
Storage Stability	-20°C/1 year
Synonyms	
Observed Band	74kD
Cell Pathway	Cytoplasm, cytoskeleton, microtubule organizing center, centrosome . Cytoplasm, cytoskeleton, cilium basal body . Localizes to centrosomes throughout the cell cycle. After centrosome duplication, it usually remains associated only with the mother centrosome, containing the older mature centriole and particles surrounding it. During prophase, additional particles accumulate around both separating centrosomes. Does not accumulate at the microtubule minus ends, but instead localizes to the centrosomes and centrosome-surrounding area in a microtubule-independent and dependent manner, respectively. .
Tissue Specificity	Uterus,
Function	microtubule cytoskeleton organization, cytoskeleton organization, microtubule-based process, cell cycle, cell cycle process, microtubule organizing center organization, spindle pole body organization,

Nanjing BYabscience technology Co.,Ltd



Background	kizuna centrosomal protein(KIZ) Homo sapiens The protein encoded by this gene localizes to centrosomes, strengthening and stabilizing the pericentriolar region prior to spindle formation. The encoded protein usually remains with the mother centrosome after centrosomal duplication. Sevral transcript variants encoding different isoforms have been found for this gene. [provided by RefSeq, Feb 2013],
matters needing attention	Avoid repeated freezing and thawing!
Usage suggestions	This product can be used in immunological reaction related experiments. For more information, please consult technical personnel.

Products Images



Western Blot analysis of various cells using KIZ Monoclonal Antibody