



# GRP78 BiP Monoclonal Antibody

<b>Catalog No</b>	BYmab-04351
<b>Isotype</b>	IgG
<b>Reactivity</b>	Human;Mouse;Rat;Fish
<b>Applications</b>	WB
<b>Gene Name</b>	HSPA5 GRP78
<b>Protein Name</b>	GRP78 BiP
<b>Immunogen</b>	Synthetic peptide from human protein at AA range: 505-570
<b>Specificity</b>	The antibody detects endogenous GRP78 BiP
<b>Formulation</b>	Liquid in PBS containing 50% glycerol, 0.5% BSA and 0.02% sodium azide.
<b>Source</b>	Monoclonal, Mouse,IgG
<b>Purification</b>	The antibody was affinity-purified from mouse antiserum by affinity-chromatography using epitope-specific immunogen.
<b>Dilution</b>	WB 1:500-2000
<b>Concentration</b>	1 mg/ml
<b>Purity</b>	≥90%
<b>Storage Stability</b>	-20°C/1 year
<b>Synonyms</b>	78 kDa glucose-regulated protein (GRP-78) (Endoplasmic reticulum luminal Ca(2+)-binding protein grp78) (Heat shock 70 kDa protein 5) (Immunoglobulin heavy chain-binding protein) (BiP)
<b>Observed Band</b>	78kD
<b>Cell Pathway</b>	Endoplasmic reticulum lumen . Melanosome . Cytoplasm . Cell surface . Identified by mass spectrometry in melanosome fractions from stage I to stage IV (PubMed:12643545). Localizes to the cell surface of epithelial cells in response to high levels of free iron (PubMed:20484814, PubMed:24355926, PubMed:27159390). .
<b>Tissue Specificity</b>	Articular cartilage,Brain,Cajal-Retzius cell,Cervix carcino
<b>Function</b>	disease:Autoantigen in rheumatoid arthritis [MIM:180300].,function:Probably plays a role in facilitating the assembly of multimeric protein complexes inside the ER.,similarity:Belongs to the heat shock protein 70 family.,subcellular location:Identified by mass spectrometry in melanosome fractions from stage I to stage IV.,subunit:Interacts with DNAJC1 (via J domain) (By similarity). Component of an EIF2 complex at least composed of CUGBP1, CALR, CALR3,

**Nanjing BYabs science technology Co.,Ltd**



EIF2S1, EIF2S2, HSP90B1 and HSPA5. Part a large chaperone multiprotein complex comprising CABP1, DNAJB11, HSP90B1, HSPA5, HYOU, PDIA2, PDIA4, PPIB, SDF2L1, UGT1A1 and very small amounts of ERP29, but not, or at very low levels, CALR nor CANX. Interacts with TMEM132A.,

#### Background

The protein encoded by this gene is a member of the heat shock protein 70 (HSP70) family. It is localized in the lumen of the endoplasmic reticulum (ER), and is involved in the folding and assembly of proteins in the ER. As this protein interacts with many ER proteins, it may play a key role in monitoring protein transport through the cell.[provided by RefSeq, Sep 2010],

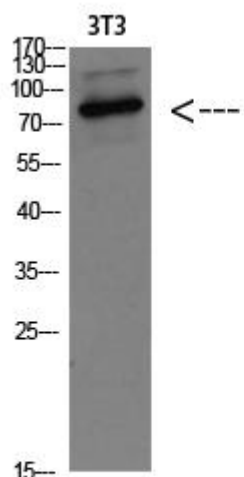
#### matters needing attention

Avoid repeated freezing and thawing!

#### Usage suggestions

This product can be used in immunological reaction related experiments. For more information, please consult technical personnel.

## Products Images



Western Blot analysis of various cells using GRP78 BiP Monoclonal Antibody