



DCI Monoclonal Antibody

| | |
|---------------------------|---|
| Catalog No | BYmab-04321 |
| Isotype | IgG |
| Reactivity | Human;Rat;Mouse; |
| Applications | WB |
| Gene Name | ECI1 |
| Protein Name | Enoyl-CoA delta isomerase 1 mitochondrial |
| Immunogen | Synthesized peptide derived from DCI . at AA range: c-terminal |
| Specificity | DCI Monoclonal Antibody detects endogenous levels of DCI protein. |
| Formulation | Liquid in PBS containing 50% glycerol, 0.5% BSA and 0.02% sodium azide. |
| Source | Monoclonal, Mouse,IgG |
| Purification | The antibody was affinity-purified from mouse antiserum by affinity-chromatography using epitope-specific immunogen. |
| Dilution | WB 1:500-2000 |
| Concentration | 1 mg/ml |
| Purity | ≥90% |
| Storage Stability | -20°C/1 year |
| Synonyms | ECI1; DCI; Enoyl-CoA delta isomerase 1, mitochondrial; 3,2-trans-enoyl-CoA isomerase; Delta(3),Delta(2)-enoyl-CoA isomerase; D3,D2-enoyl-CoA isomerase; Dodecenoyl-CoA isomerase |
| Observed Band | 30kD |
| Cell Pathway | Mitochondrion matrix . |
| Tissue Specificity | Expressed in liver (at protein level). |
| Function | catalytic activity:(3Z)-dodec-3-enoyl-CoA = (2E)-dodec-2-enoyl-CoA.,function:Able to isomerize both 3-cis and 3-trans double bonds into the 2-trans form in a range of enoyl-CoA species.,pathway:Lipid metabolism; fatty acid beta-oxidation.,similarity:Belongs to the enoyl-CoA hydratase/isomerase family.,subunit:Homotrimer., |
| Background | This gene encodes a member of the hydratase/isomerase superfamily. The protein encoded is a key mitochondrial enzyme involved in beta-oxidation of unsaturated fatty acids. It catalyzes the transformation of 3-cis and 3-trans-enoyl-CoA esters arising during the stepwise degradation of cis-, mono-, |

Nanjing BYabscience technology Co.,Ltd



and polyunsaturated fatty acids to the 2-trans-enoyl-CoA intermediates. Alternatively spliced transcript variants have been described. [provided by RefSeq, May 2010],

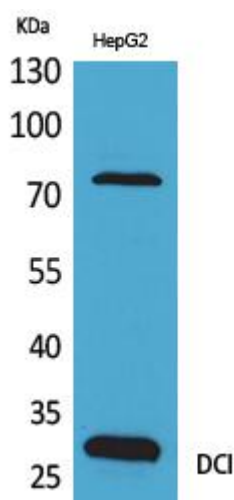
matters needing attention

Avoid repeated freezing and thawing!

Usage suggestions

This product can be used in immunological reaction related experiments. For more information, please consult technical personnel.

Products Images



Western Blot analysis of various cells using DCI Monoclonal Antibody