



Chymase Monoclonal Antibody

Catalog No	BYmab-04304
Isotype	IgG
Reactivity	Human;Rat;Mouse;
Applications	WB
Gene Name	CMA1
Protein Name	Chymase
Immunogen	Synthesized peptide derived from the Internal region of human Chymase.
Specificity	Chymase Monoclonal Antibody detects endogenous levels of Chymase protein.
Formulation	Liquid in PBS containing 50% glycerol, 0.5% BSA and 0.02% sodium azide.
Source	Monoclonal, Mouse,IgG
Purification	The antibody was affinity-purified from mouse antiserum by affinity-chromatography using epitope-specific immunogen.
Dilution	WB 1:500-2000
Concentration	1 mg/ml
Purity	≥90%
Storage Stability	-20°C/1 year
Synonyms	CMA1; CYH; CYM; Chymase; Alpha-chymase; Mast cell protease I
Observed Band	27kD
Cell Pathway	Secreted. Cytoplasmic granule. Mast cell granules.
Tissue Specificity	Mast cells in lung, heart, skin and placenta. Expressed in both normal skin and in urticaria pigmentosa lesions.
Function	catalytic activity:Preferential cleavage: Phe- -Xaa > Tyr- -Xaa > Trp- -Xaa > Leu- -Xaa.,function:Major secreted protease of mast cells with suspected roles in vasoactive peptide generation, extracellular matrix degradation, and regulation of gland secretion.,similarity:Belongs to the peptidase S1 family.,similarity:Belongs to the peptidase S1 family. Granzyme subfamily.,similarity:Contains 1 peptidase S1 domain.,subcellular location:Mast cell granules.,tissue specificity:Mast cells in lung, heart, skin and placenta.,
Background	chymase 1(CMA1) Homo sapiens This gene encodes a chymotryptic serine proteinase that belongs to the peptidase family S1. It is expressed in mast cells and is thought to function in the degradation of the extracellular matrix, the regulation of submucosal gland secretion, and the generation of vasoactive

Nanjing BYabscience technology Co.,Ltd



peptides. In the heart and blood vessels, this protein, rather than angiotensin converting enzyme, is largely responsible for converting angiotensin I to the vasoactive peptide angiotensin II. Alternative splicing results in multiple variants. [provided by RefSeq, Apr 2015],

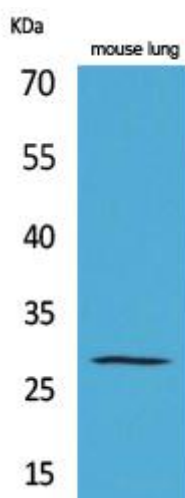
matters needing attention

Avoid repeated freezing and thawing!

Usage suggestions

This product can be used in immunological reaction related experiments. For more information, please consult technical personnel.

Products Images



Western Blot analysis of various cells using Chymase Monoclonal Antibody

Nanjing BYabs science technology Co.,Ltd

网址: www.njbybio.com

官方热线: 025-5229-8998

监督电话: 15950492658