



# Tafazzin Monoclonal Antibody

Catalog No	BYmab-04235
Isotype	IgG
Reactivity	Human;Rat;Mouse;
Applications	WB
Gene Name	TAZ
Protein Name	Tafazzin
Immunogen	Synthesized peptide derived from the Internal region of human Tafazzin.
Specificity	Tafazzin Monoclonal Antibody detects endogenous levels of Tafazzin protein.
Formulation	Liquid in PBS containing 50% glycerol, 0.5% BSA and 0.02% sodium azide.
Source	Monoclonal, Mouse,IgG
Purification	The antibody was affinity-purified from mouse antiserum by affinity-chromatography using epitope-specific immunogen.
Dilution	WB 1:500-2000
Concentration	1 mg/ml
Purity	≥90%
Storage Stability	-20°C/1 year
Synonyms	TAZ; EFE2; G4.5; Tafazzin; Protein G4.5
Observed Band	33kD
Cell Pathway	Mitochondrion outer membrane ; Peripheral membrane protein ; Intermembrane side . Mitochondrion inner membrane ; Peripheral membrane protein ; Intermembrane side .; [Isoform 1]: Mitochondrion membrane .; [Isoform 2]: Cytoplasm .; [Isoform 3]: Mitochondrion membrane .; [Isoform 5]: Mitochondrion membrane .; [Isoform 6]: Cytoplasm .; [Isoform 7]: Mitochondrion membrane .; [Isoform 8]: Cytoplasm .; [Isoform 9]: Cytoplasm .
Tissue Specificity	High levels in cardiac and skeletal muscle. Up to 10 isoforms can be present in different amounts in different tissues. Most isoforms are ubiquitous. Isoforms that lack the N-terminus are found in leukocytes and fibroblasts, but not in heart and skeletal muscle. Some forms appear restricted to cardiac and skeletal muscle or to leukocytes.
Function	disease:Defects in TAZ are the cause of 3-methylglutaconic aciduria type 2 (MGA2) [MIM:302060]. MGA2 is a severe metabolic disorder, often fatal in childhood, characterized by dilated cardiomyopathy, skeletal myopathy, short stature, neutropenia and 3-methylglutaconicaciduria.,disease:Defects in TAZ are

Nanjing BYabscience technology Co.,Ltd



the cause of non-compaction of left ventricular myocardium isolated X-linked (LVNCX) [MIM:300183]. LVNC is due to an arrest of myocardial morphogenesis. The disorder is characterized by a hypertrophic left ventricular with deep trabeculations and with poor systolic function, with or without associated left ventricular dilation. In some cases, the right ventricle is also affected.,domain:The hydrophilic domain may serve as an exposed loop interacting with other proteins.,function:Some isoforms may be involved in cardiolipin metabolism.,online information:TAZ mutation db,similarity:Belongs

## Background

This gene encodes a protein that is expressed at high levels in cardiac and skeletal muscle. Mutations in this gene have been associated with a number of clinical disorders including Barth syndrome, dilated cardiomyopathy (DCM), hypertrophic DCM, endocardial fibroelastosis, and left ventricular noncompaction (LVNC). Multiple transcript variants encoding different isoforms have been described. A long form and a short form of each of these isoforms is produced; the short form lacks a hydrophobic leader sequence and may exist as a cytoplasmic protein rather than being membrane-bound. Other alternatively spliced transcripts have been described but the full-length nature of all these transcripts is not known. [provided by RefSeq, Jul 2008],

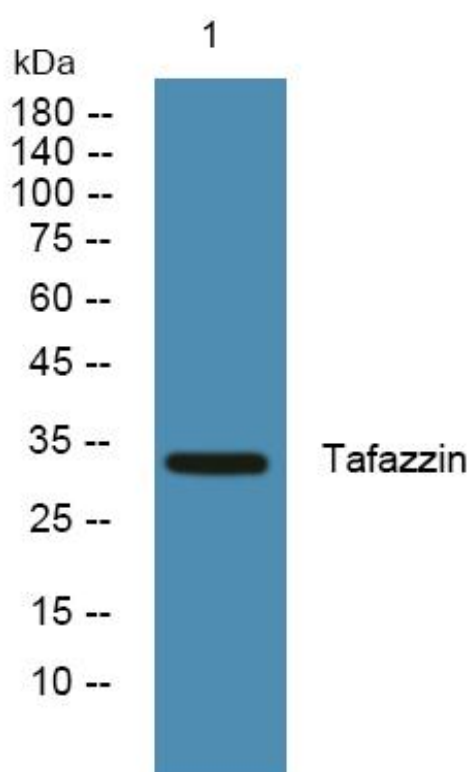
## matters needing attention

Avoid repeated freezing and thawing!

## Usage suggestions

This product can be used in immunological reaction related experiments. For more information, please consult technical personnel.

## Products Images



Western Blot analysis of various cells using Tafazzin Monoclonal Antibody

Nanjing BYabscience technology Co.,Ltd