



Stlp1 Monoclonal Antibody

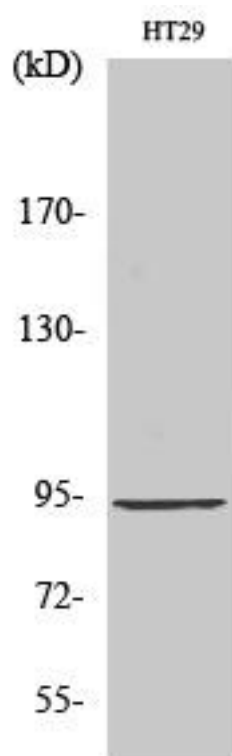
Catalog No	BYmab-04229
Isotype	IgG
Reactivity	Human;Rat;Mouse;
Applications	WB
Gene Name	ELP2
Protein Name	Elongator complex protein 2
Immunogen	The antiserum was produced against synthesized peptide derived from human ELP2. AA range:771-820
Specificity	Stlp1 Monoclonal Antibody detects endogenous levels of Stlp1 protein.
Formulation	Liquid in PBS containing 50% glycerol, 0.5% BSA and 0.02% sodium azide.
Source	Monoclonal, Mouse,IgG
Purification	The antibody was affinity-purified from mouse antiserum by affinity-chromatography using epitope-specific immunogen.
Dilution	WB 1:500-2000
Concentration	1 mg/ml
Purity	≥90%
Storage Stability	-20°C/1 year
Synonyms	ELP2; STATIP1; Elongator complex protein 2; ELP2; SHINC-2; STAT3-interacting protein 1; StIP1
Observed Band	93kD
Cell Pathway	Cytoplasm . Nucleus .
Tissue Specificity	Hematopoietic,Liver,Ovary,Uterus,
Function	function:Acts as subunit of the RNA polymerase II elongator complex, which is a histone acetyltransferase component of the RNA polymerase II (Pol II) holoenzyme and is involved in transcriptional elongation. Elongator may play a role in chromatin remodeling and is involved in acetylation of histones H3 and probably H4.,function:Regulates the ligand-dependent activation of STAT3.,similarity:Belongs to the WD repeat ELP2 family.,similarity:Contains 14 WD repeats.,subunit:Component of the RNA polymerase II elongator complex (Elongator), which consists of IKBKAP/ELP1, STIP1/ELP2, ELP3, ELP4, and two yet unidentified proteins, p30 and p38. Elongator associates with the C-terminal domain (CTD) of Pol II largest subunit. Interacts with STAT3 and JAKs.,

Nanjing BYabscience technology Co.,Ltd



Background	The protein encoded by this gene is a core subunit of the elongator complex, a histone acetyltransferase complex that associates with RNA polymerase II. In addition to histone acetylation, the encoded protein effects transcriptional elongation and may help remodel chromatin. [provided by RefSeq, May 2016],
matters needing attention	Avoid repeated freezing and thawing!
Usage suggestions	This product can be used in immunological reaction related experiments. For more information, please consult technical personnel.

Products Images



Western Blot analysis of various cells using Stlp1 Monoclonal Antibody