



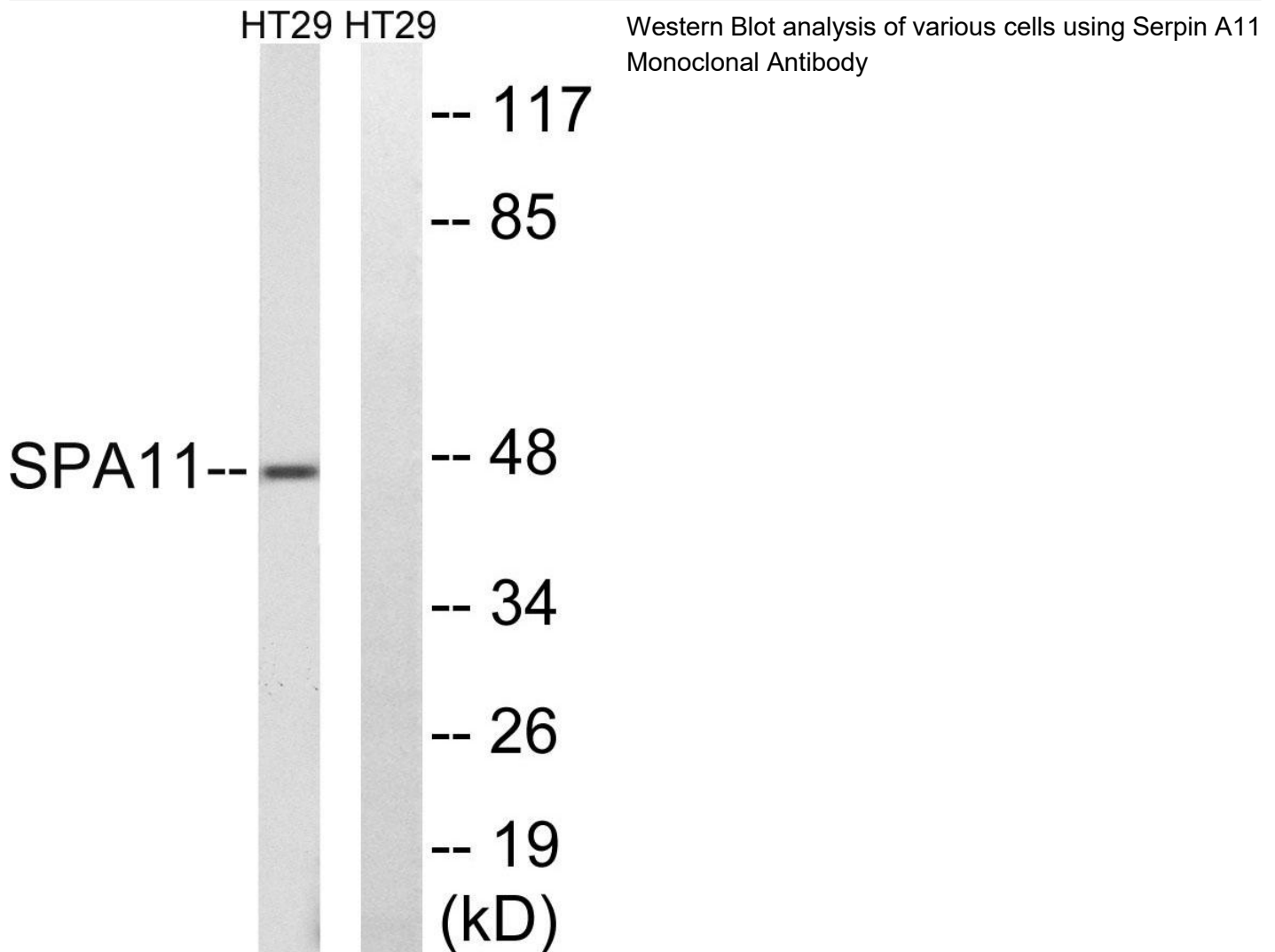
Serpin A11 Monoclonal Antibody

Catalog No	BYmab-04203
Isotype	IgG
Reactivity	Human;Rat;Mouse;
Applications	WB
Gene Name	SERPINA11
Protein Name	Serpin A11
Immunogen	The antiserum was produced against synthesized peptide derived from human SERPINA11. AA range:191-240
Specificity	Serpin A11 Monoclonal Antibody detects endogenous levels of Serpin A11 protein.
Formulation	Liquid in PBS containing 50% glycerol, 0.5% BSA and 0.02% sodium azide.
Source	Monoclonal, Mouse,IgG
Purification	The antibody was affinity-purified from mouse antiserum by affinity-chromatography using epitope-specific immunogen.
Dilution	WB 1:500-2000
Concentration	1 mg/ml
Purity	≥90%
Storage Stability	-20°C/1 year
Synonyms	SERPINA11; Serpin A11
Observed Band	47kD
Cell Pathway	Secreted .
Tissue Specificity	Fetal liver,
Function	similarity:Belongs to the serpin family.,
Background	similarity:Belongs to the serpin family.,
matters needing attention	Avoid repeated freezing and thawing!
Usage suggestions	This product can be used in immunological reaction related experiments. For more information, please consult technical personnel.

Nanjing BYabscience technology Co.,Ltd



Products Images



Nanjing BYabs science technology Co.,Ltd

网址: www.njbybio.com

官方热线: 025-5229-8998

监督电话: 15950492658