



# Septin 7 Monoclonal Antibody

<b>Catalog No</b>	BYmab-04201
<b>Isotype</b>	IgG
<b>Reactivity</b>	Human;Mouse;Rat
<b>Applications</b>	WB
<b>Gene Name</b>	7-9月
<b>Protein Name</b>	Septin-7
<b>Immunogen</b>	The antiserum was produced against synthesized peptide derived from human SEPT7. AA range:350-399
<b>Specificity</b>	Septin 7 Monoclonal Antibody detects endogenous levels of Septin 7 protein.
<b>Formulation</b>	Liquid in PBS containing 50% glycerol, 0.5% BSA and 0.02% sodium azide.
<b>Source</b>	Monoclonal, Mouse,IgG
<b>Purification</b>	The antibody was affinity-purified from mouse antiserum by affinity-chromatography using epitope-specific immunogen.
<b>Dilution</b>	WB 1:500-2000
<b>Concentration</b>	1 mg/ml
<b>Purity</b>	≥90%
<b>Storage Stability</b>	-20°C/1 year
<b>Synonyms</b>	SEPT7; CDC10; Septin-7; CDC10 protein homolog
<b>Observed Band</b>	48kD
<b>Cell Pathway</b>	Cytoplasm . Chromosome, centromere, kinetochore . Cytoplasm, cytoskeleton, spindle . Cleavage furrow . Midbody . Cytoplasm, cytoskeleton, cilium axoneme . Cell projection, cilium, flagellum . Distributed throughout the cytoplasm in prometaphase cells. Associated with the spindle during metaphase. Associated with the central spindle and at the cleavage furrow in anaphase cells. Detected at the midbody in telophase. Associated with actin stress fibers (By similarity). Found in the sperm annulus (PubMed:25588830). .
<b>Tissue Specificity</b>	Widely expressed.
<b>Function</b>	function:Required for normal progress through mitosis. Involved in cytokinesis. Required for normal association of CENPE with the kinetochore.,similarity:Belongs to the septin family.,subcellular location:Distributed throughout the cytoplasm in prometaphase cells. Associated with the spindle during metaphase. Associated with the central spindle and at the cleavage furrow in anaphase cells. Detected at the midbody in

**Nanjing BYabscience technology Co.,Ltd**



telophase.,subunit:Heterohexamer composed of two heterotrimers containing one copy each of SEPT2, SEPT6 and SEPT7. The asymmetrical heterotrimers associate head-to-head to form a hexameric unit that assembles into filaments. Interacts directly with CENPE and links CENPE to septin filaments composed of SEPT2, SEPT6 and SEPT7.,

#### Background

septin 7(SEPT7) Homo sapiens This gene encodes a protein that is highly similar to the CDC10 protein of *Saccharomyces cerevisiae*. The protein also shares similarity with Diff 6 of *Drosophila* and with H5 of mouse. Each of these similar proteins, including the yeast CDC10, contains a GTP-binding motif. The yeast CDC10 protein is a structural component of the 10 nm filament which lies inside the cytoplasmic membrane and is essential for cytokinesis. This human protein functions in gliomagenesis and in the suppression of glioma cell growth, and it is required for the association of centromere-associated protein E with the kinetochore. Alternative splicing results in multiple transcript variants. Several related pseudogenes have been identified on chromosomes 5, 7, 9, 10, 11, 14, 17 and 19. [provided by RefSeq, Jul 2011],

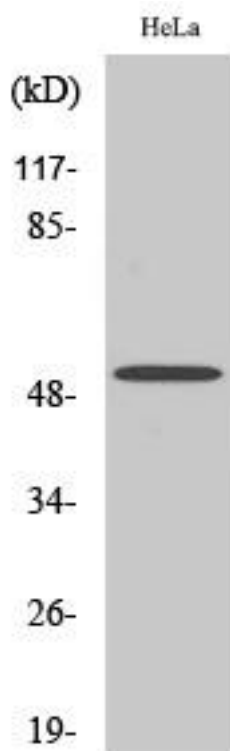
#### matters needing attention

Avoid repeated freezing and thawing!

#### Usage suggestions

This product can be used in immunological reaction related experiments. For more information, please consult technical personnel.

## Products Images



Western Blot analysis of various cells using Septin 7 Monoclonal Antibody

Nanjing BYabs science technology Co.,Ltd

网址: [www.njbybio.com](http://www.njbybio.com)

官方热线: 025-5229-8998

监督电话: 15950492658