



# Sds22 Monoclonal Antibody

Catalog No	BYmab-04190
Isotype	IgG
Reactivity	Human;Rat;Mouse;
Applications	WB
Gene Name	PPP1R7
Protein Name	Protein phosphatase 1 regulatory subunit 7
Immunogen	The antiserum was produced against synthesized peptide derived from human PPP1R7. AA range:136-185
Specificity	Sds22 Monoclonal Antibody detects endogenous levels of Sds22 protein.
Formulation	Liquid in PBS containing 50% glycerol, 0.5% BSA and 0.02% sodium azide.
Source	Monoclonal, Mouse,IgG
Purification	The antibody was affinity-purified from mouse antiserum by affinity-chromatography using epitope-specific immunogen.
Dilution	WB 1:500-2000
Concentration	1 mg/ml
Purity	≥90%
Storage Stability	-20°C/1 year
Synonyms	PPP1R7; SDS22; Protein phosphatase 1 regulatory subunit 7; Protein phosphatase 1 regulatory subunit 22
Observed Band	48kD
Cell Pathway	Nucleus .
Tissue Specificity	Widely expressed.
Function	function:Regulatory subunit of protein phosphatase 1.,similarity:Belongs to the SDS22 family.,similarity:Contains 10 LRR (leucine-rich) repeats.,subunit:Interacts with PPP1CA, PPP1CB and PPP1CC/PPP1G isoform 1.,tissue specificity:Widely expressed.,
Background	This gene encodes a protein subunit that regulates the activity of the serine/threonine phosphatase, protein phosphatase-1. The encoded protein is required for completion of the mitotic cycle and for targeting protein phosphatase-1 to mitotic kinetochores. Alternate splicing results in multiple transcript variants. [provided by RefSeq, Sep 2013],

Nanjing BYabscience technology Co.,Ltd



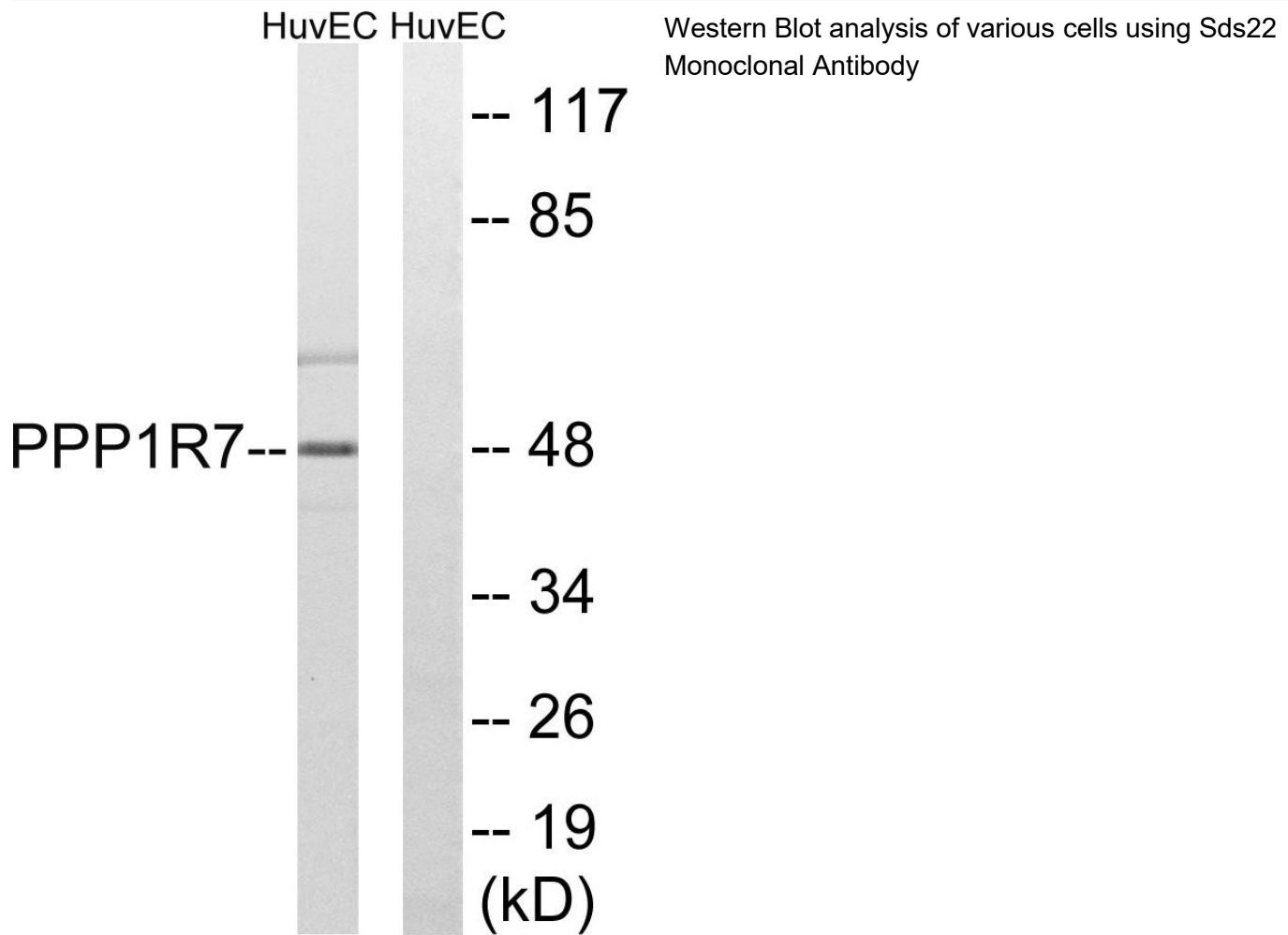
**matters needing attention**

Avoid repeated freezing and thawing!

**Usage suggestions**

This product can be used in immunological reaction related experiments. For more information, please consult technical personnel.

**Products Images**



Nanjing BYabs science technology Co.,Ltd

网址: [www.njbybio.com](http://www.njbybio.com)

官方热线: 025-5229-8998

监督电话: 15950492658