



# RO60 Monoclonal Antibody

Catalog No	BYmab-04179
Isotype	IgG
Reactivity	Human;Rat;Mouse;
Applications	WB
Gene Name	TROVE2
Protein Name	60 kDa SS-A/Ro ribonucleoprotein
Immunogen	The antiserum was produced against synthesized peptide derived from human TROVE2. AA range:311-360
Specificity	RO60 Monoclonal Antibody detects endogenous levels of RO60 protein.
Formulation	Liquid in PBS containing 50% glycerol, 0.5% BSA and 0.02% sodium azide.
Source	Monoclonal, Mouse,IgG
Purification	The antibody was affinity-purified from mouse antiserum by affinity-chromatography using epitope-specific immunogen.
Dilution	WB 1:500-2000
Concentration	1 mg/ml
Purity	≥90%
Storage Stability	-20°C/1 year
Synonyms	TROVE2; RO60; SSA2; 60 kDa SS-A/Ro ribonucleoprotein; 60 kDa Ro protein; 60 kDa ribonucleoprotein Ro; RoRNP; Ro 60 kDa autoantigen; Sjogren syndrome antigen A2; Sjogren syndrome type A antigen; SS-A; TROVE domain family member 2
Observed Band	70kD
Cell Pathway	Cytoplasm . Localized in cytoplasmic mRNP granules containing untranslated mRNAs. .
Tissue Specificity	Keratinocyte,Pre-B cell,Testis,
Function	disease:Sera from patients with systemic lupus erythematosus (SLE) often contain antibodies that react with the normal cellular SSA2 protein as if this antigen was foreign.,function:RNA-binding protein that binds to several small cytoplasmic RNA molecules known as Y RNAs. May stabilize these RNAs from degradation.,PTM:Phosphorylated upon DNA damage, probably by ATM or ATR.,similarity:Belongs to the Ro 60 kDa family.,similarity:Contains 1 TROVE domain.,subunit:Found in a complex with PUF60 and Y5 RNA. Interacts with

Nanjing BYabscience technology Co.,Ltd



RIP11.,

#### Background

disease:Sera from patients with systemic lupus erythematosus (SLE) often contain antibodies that react with the normal cellular SSA2 protein as if this antigen was foreign.,function:RNA-binding protein that binds to several small cytoplasmic RNA molecules known as Y RNAs. May stabilize these RNAs from degradation.,PTM:Phosphorylated upon DNA damage, probably by ATM or ATR.,similarity:Belongs to the Ro 60 kDa family.,similarity:Contains 1 TROVE domain.,subunit:Found in a complex with PUF60 and Y5 RNA. Interacts with RIP11.,

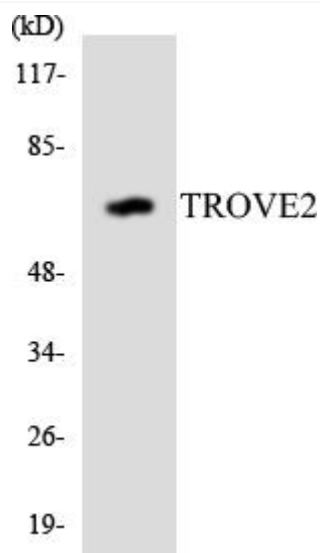
#### matters needing attention

Avoid repeated freezing and thawing!

#### Usage suggestions

This product can be used in immunological reaction related experiments. For more information, please consult technical personnel.

### Products Images



Western Blot analysis of various cells using RO60 Monoclonal Antibody

Nanjing BYabs science technology Co.,Ltd

网址: [www.njbybio.com](http://www.njbybio.com)

官方热线: 025-5229-8998

监督电话: 15950492658