



RIN3 Monoclonal Antibody

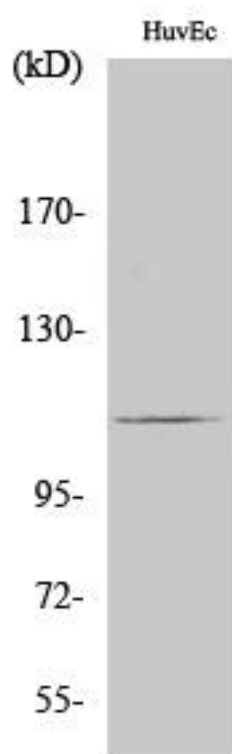
Catalog No	BYmab-04176
Isotype	IgG
Reactivity	Human;Rat;Mouse;
Applications	WB
Gene Name	RIN3
Protein Name	Ras and Rab interactor 3
Immunogen	The antiserum was produced against synthesized peptide derived from human RIN3. AA range:391-440
Specificity	RIN3 Monoclonal Antibody detects endogenous levels of RIN3 protein.
Formulation	Liquid in PBS containing 50% glycerol, 0.5% BSA and 0.02% sodium azide.
Source	Monoclonal, Mouse,IgG
Purification	The antibody was affinity-purified from mouse antiserum by affinity-chromatography using epitope-specific immunogen.
Dilution	WB 1:500-2000
Concentration	1 mg/ml
Purity	≥90%
Storage Stability	-20°C/1 year
Synonyms	RIN3; Ras and Rab interactor 3; Ras interaction/interference protein 3
Observed Band	107kD
Cell Pathway	Cytoplasm . Cytoplasmic vesicle . Early endosome . Activation of tyrosine phosphorylation signaling induces translocation to cytoplasmic vesicles. .
Tissue Specificity	Widely expressed.
Function	caution:The region from Asp-168 to Pro-327 is deduced from the genomic sequence by similarity to the mouse sequence.,function:Potential Ras effector protein. May function as a guanine nucleotide exchange (GEF), by exchanging bound GDP for free GTP.,similarity:Belongs to the RIN (Ras interaction/interference) family.,similarity:Contains 1 Ras-associating domain.,similarity:Contains 1 SH2 domain.,similarity:Contains 1 VPS9 domain.,subcellular location:Activation of tyrosine phosphorylation signaling induces translocation to cytoplasmic vesicles.,subunit:Interacts with RAB5B and BIN1.,tissue specificity:Widely expressed.,

Nanjing BYabscience technology Co.,Ltd



Background	Summary: This protein encoded by this gene is a member of the RIN family of Ras interaction-interference proteins, which are binding partners to the RAB5 small GTPases. The protein functions as a guanine nucleotide exchange for RAB5B and RAB31. Alternative splicing results in multiple transcript variants. [provided by RefSeq, Feb 2016],
matters needing attention	Avoid repeated freezing and thawing!
Usage suggestions	This product can be used in immunological reaction related experiments. For more information, please consult technical personnel.

Products Images



Western Blot analysis of various cells using RIN3 Monoclonal Antibody