



# Ribosomal Protein S27L Monoclonal Antibody

Catalog No	BYmab-04166
Isotype	IgG
Reactivity	Human;Mouse
Applications	WB
Gene Name	RPS27L
Protein Name	40S ribosomal protein S27-like
Immunogen	The antiserum was produced against synthesized peptide derived from human RPS27L. AA range:1-50
Specificity	Ribosomal Protein S27L Monoclonal Antibody detects endogenous levels of Ribosomal Protein S27L protein.
Formulation	Liquid in PBS containing 50% glycerol, 0.5% BSA and 0.02% sodium azide.
Source	Monoclonal, Mouse,IgG
Purification	The antibody was affinity-purified from mouse antiserum by affinity-chromatography using epitope-specific immunogen.
Dilution	WB 1:500-2000
Concentration	1 mg/ml
Purity	≥90%
Storage Stability	-20°C/1 year
Synonyms	RPS27L; 40S ribosomal protein S27-like
Observed Band	18kD
Cell Pathway	nucleus,nucleoplasm,ribosome,cytosolic small ribosomal subunit,
Tissue Specificity	Kidney,Umbilical cord blood,
Function	cofactor:Binds 1 zinc ion per subunit .,similarity:Belongs to the ribosomal protein S27e family.,
Background	This gene encodes a protein sharing 96% amino acid similarity with ribosomal protein S27, which suggests the encoded protein may be a component of the 40S ribosomal subunit. [provided by RefSeq, Jul 2008],
matters needing attention	Avoid repeated freezing and thawing!

Nanjing BYabscience technology Co.,Ltd

网址: [www.njbybio.com](http://www.njbybio.com)

官方热线: 025-5229-8998

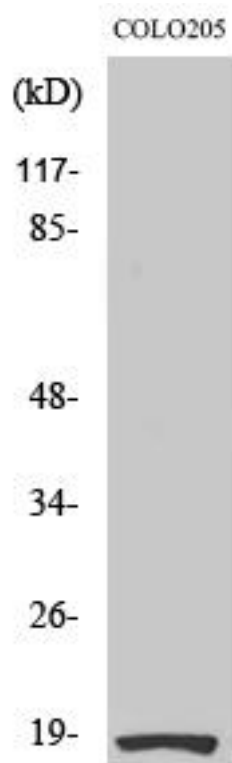
监督电话: 15950492658



### Usage suggestions

This product can be used in immunological reaction related experiments. For more information, please consult technical personnel.

## Products Images



Western Blot analysis of various cells using Ribosomal Protein S27L Monoclonal Antibody