



Ribosomal Protein S2 Monoclonal Antibody

Catalog No	BYmab-04161
Isotype	IgG
Reactivity	Human;Mouse;Rat
Applications	WB
Gene Name	RPS2
Protein Name	40S ribosomal protein S2
Immunogen	The antiserum was produced against synthesized peptide derived from human RPS2. AA range:244-293
Specificity	Ribosomal Protein S2 Monoclonal Antibody detects endogenous levels of Ribosomal Protein S2 protein.
Formulation	Liquid in PBS containing 50% glycerol, 0.5% BSA and 0.02% sodium azide.
Source	Monoclonal, Mouse,IgG
Purification	The antibody was affinity-purified from mouse antiserum by affinity-chromatography using epitope-specific immunogen.
Dilution	WB 1:500-2000
Concentration	1 mg/ml
Purity	≥90%
Storage Stability	-20°C/1 year
Synonyms	RPS2; RPS4; 40S ribosomal protein S2; 40S ribosomal protein S4; Protein LLRep3
Observed Band	31kD
Cell Pathway	nucleus,nucleoplasm,nucleolus,cytoplasm,cytosol,ribosome,cell-cell adherens junction,focal adhesion,small ribosomal subunit,membrane,cytosolic small ribosomal subunit,extracellular exosome,
Tissue Specificity	Brain,Cervix,Colon,Epithelium,Eye,Kidney,Lung,Mammary gland,Muscle,Placenta,Skin,Te
Function	similarity:Belongs to the ribosomal protein S5P family.,similarity:Contains 1 S5 DRBM domain.,
Background	Ribosomes, the organelles that catalyze protein synthesis, consist of a small 40S subunit and a large 60S subunit. Together these subunits are composed of 4 RNA species and approximately 80 structurally distinct proteins. This gene encodes a ribosomal protein that is a component of the 40S subunit. The protein belongs to the S5P family of ribosomal proteins. It is located in the cytoplasm. This gene shares sequence similarity with mouse LLRep3. It is co-transcribed with the small

Nanjing BYabscience technology Co.,Ltd



nucleolar RNA gene U64, which is located in its third intron. As is typical for genes encoding ribosomal proteins, there are multiple processed pseudogenes of this gene dispersed through the genome. [provided by RefSeq, Jul 2008],

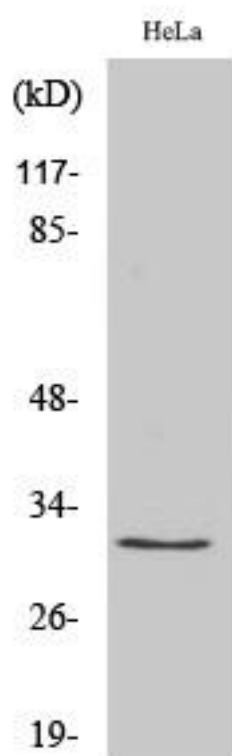
matters needing attention

Avoid repeated freezing and thawing!

Usage suggestions

This product can be used in immunological reaction related experiments. For more information, please consult technical personnel.

Products Images



Western Blot analysis of various cells using Ribosomal Protein S2 Monoclonal Antibody