



# Ribosomal Protein S18 Monoclonal Antibody

<b>Catalog No</b>	BYmab-04158
<b>Isotype</b>	IgG
<b>Reactivity</b>	Human;Mouse;Rat
<b>Applications</b>	WB
<b>Gene Name</b>	RPS18
<b>Protein Name</b>	40S ribosomal protein S18
<b>Immunogen</b>	Synthesized peptide derived from Ribosomal Protein S18 . at AA range: 50-130
<b>Specificity</b>	Ribosomal Protein S18 Monoclonal Antibody detects endogenous levels of Ribosomal Protein S18 protein.
<b>Formulation</b>	Liquid in PBS containing 50% glycerol, 0.5% BSA and 0.02% sodium azide.
<b>Source</b>	Monoclonal, Mouse,IgG
<b>Purification</b>	The antibody was affinity-purified from mouse antiserum by affinity-chromatography using epitope-specific immunogen.
<b>Dilution</b>	WB 1:500-2000
<b>Concentration</b>	1 mg/ml
<b>Purity</b>	≥90%
<b>Storage Stability</b>	-20°C/1 year
<b>Synonyms</b>	RPS18; D6S218E; 40S ribosomal protein S18; Ke-3; Ke3
<b>Observed Band</b>	18kD
<b>Cell Pathway</b>	Cytoplasm.
<b>Tissue Specificity</b>	Bone,Brain,Colon carcinoma,Embryonal rhabdomyosarcoma,Placenta,
<b>Function</b>	function:Located at the top of the head of the 40S subunit, it contacts several helices of the 18S rRNA.,similarity:Belongs to the ribosomal protein S13P family.,
<b>Background</b>	Ribosomes, the organelles that catalyze protein synthesis, consist of a small 40S subunit and a large 60S subunit. Together these subunits are composed of 4 RNA species and approximately 80 structurally distinct proteins. This gene encodes a ribosomal protein that is a component of the 40S subunit. The protein belongs to the S13P family of ribosomal proteins. It is located in the cytoplasm. The gene product of the E. coli ortholog (ribosomal protein S13) is involved in the binding of fMet-tRNA, and thus, in the initiation of translation. This gene is an ortholog of mouse Ke3. As is typical for genes encoding ribosomal proteins, there are multiple processed pseudogenes of this gene dispersed through the genome. [provided by

**Nanjing BYabscience technology Co.,Ltd**



RefSeq, Jul 2008],

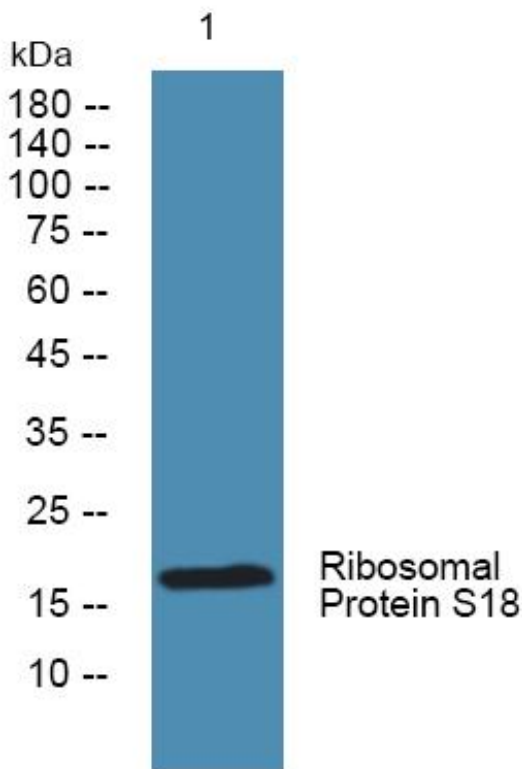
**matters needing attention**

Avoid repeated freezing and thawing!

**Usage suggestions**

This product can be used in immunological reaction related experiments. For more information, please consult technical personnel.

## Products Images



Western Blot analysis of various cells using Ribosomal Protein S18 Monoclonal Antibody

Nanjing BYabs science technology Co.,Ltd

网址: [www.njbybio.com](http://www.njbybio.com)

官方热线: 025-5229-8998

监督电话: 15950492658