



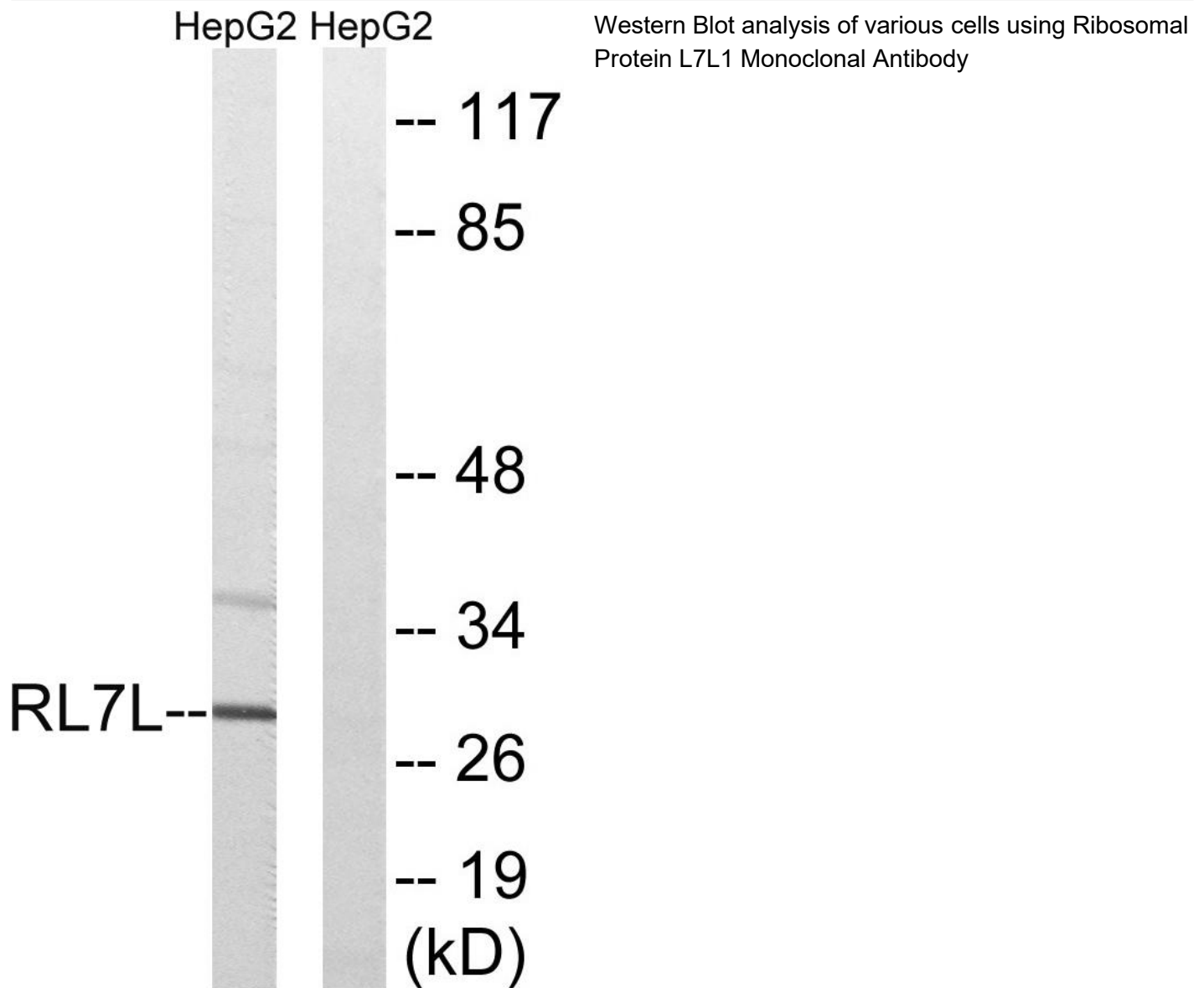
Ribosomal Protein L7L1 Monoclonal Antibody

Catalog No	BYmab-04152
Isotype	IgG
Reactivity	Human;Rat;Mouse;
Applications	WB
Gene Name	RPL7L1
Protein Name	60S ribosomal protein L7-like 1
Immunogen	The antiserum was produced against synthesized peptide derived from human RPL7L1. AA range:41-90
Specificity	Ribosomal Protein L7L1 Monoclonal Antibody detects endogenous levels of Ribosomal Protein L7L1 protein.
Formulation	Liquid in PBS containing 50% glycerol, 0.5% BSA and 0.02% sodium azide.
Source	Monoclonal, Mouse,IgG
Purification	The antibody was affinity-purified from mouse antiserum by affinity-chromatography using epitope-specific immunogen.
Dilution	WB 1:500-2000
Concentration	1 mg/ml
Purity	≥90%
Storage Stability	-20°C/1 year
Synonyms	RPL7L1; 60S ribosomal protein L7-like 1
Observed Band	29kD
Cell Pathway	nucleolus,ribosome,cytosolic large ribosomal subunit,
Tissue Specificity	Eye,
Function	similarity:Belongs to the ribosomal protein L30P family.,
Background	similarity:Belongs to the ribosomal protein L30P family.,
matters needing attention	Avoid repeated freezing and thawing!
Usage suggestions	This product can be used in immunological reaction related experiments. For more information, please consult technical personnel.

Nanjing BYabscience technology Co.,Ltd



Products Images



Nanjing BYabs science technology Co.,Ltd

网址: www.njbybio.com

官方热线: 025-5229-8998

监督电话: 15950492658