



Ribosomal Protein L39 Monoclonal Antibody

Catalog No	BYmab-04146
Isotype	IgG
Reactivity	Human;Mouse;Rat
Applications	WB
Gene Name	RPL39
Protein Name	60S ribosomal protein L39
Immunogen	The antiserum was produced against synthesized peptide derived from human RPL39. AA range:1-50
Specificity	Ribosomal Protein L39 Monoclonal Antibody detects endogenous levels of Ribosomal Protein L39 protein.
Formulation	Liquid in PBS containing 50% glycerol, 0.5% BSA and 0.02% sodium azide.
Source	Monoclonal, Mouse,IgG
Purification	The antibody was affinity-purified from mouse antiserum by affinity-chromatography using epitope-specific immunogen.
Dilution	WB 1:500-2000
Concentration	1 mg/ml
Purity	≥90%
Storage Stability	-20°C/1 year
Synonyms	RPL39; 60S ribosomal protein L39
Observed Band	6kD
Cell Pathway	extracellular space,cytosol,cytosolic large ribosomal subunit,
Tissue Specificity	Colon,Eye,Heart,
Function	miscellaneous:This protein is the smallest and one of the most basic of the proteins in liver ribosomes.,similarity:Belongs to the ribosomal protein L39e family.,
Background	Ribosomes, the organelles that catalyze protein synthesis, consist of a small 40S subunit and a large 60S subunit. Together these subunits are composed of 4 RNA species and approximately 80 structurally distinct proteins. This gene encodes a ribosomal protein that is a component of the 60S subunit. The protein belongs to the S39E family of ribosomal proteins. It is located in the cytoplasm. In rat, the protein is the smallest, and one of the most basic, proteins of the ribosome. This gene is co-transcribed with the U69 small nucleolar RNA gene, which is located in

Nanjing BYabscience technology Co.,Ltd



its second intron. As is typical for genes encoding ribosomal proteins, there are multiple processed pseudogenes of this gene dispersed through the genome. [provided by RefSeq, Jul 2008],

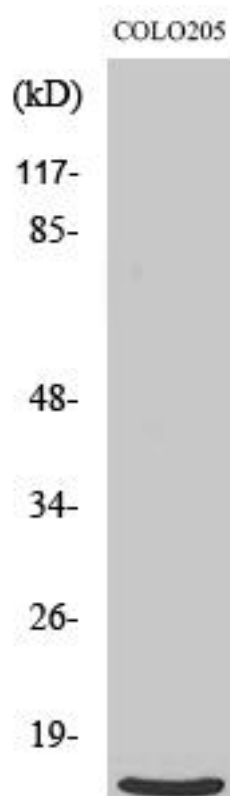
matters needing attention

Avoid repeated freezing and thawing!

Usage suggestions

This product can be used in immunological reaction related experiments. For more information, please consult technical personnel.

Products Images



Western Blot analysis of various cells using Ribosomal Protein L39 Monoclonal Antibody