



# Ribosomal Protein L34 Monoclonal Antibody

<b>Catalog No</b>	BYmab-04141
<b>Isotype</b>	IgG
<b>Reactivity</b>	Human;Mouse;Rat
<b>Applications</b>	WB
<b>Gene Name</b>	RPL34
<b>Protein Name</b>	60S ribosomal protein L34
<b>Immunogen</b>	The antiserum was produced against synthesized peptide derived from human RPL34. AA range:41-90
<b>Specificity</b>	Ribosomal Protein L34 Monoclonal Antibody detects endogenous levels of Ribosomal Protein L34 protein.
<b>Formulation</b>	Liquid in PBS containing 50% glycerol, 0.5% BSA and 0.02% sodium azide.
<b>Source</b>	Monoclonal, Mouse,IgG
<b>Purification</b>	The antibody was affinity-purified from mouse antiserum by affinity-chromatography using epitope-specific immunogen.
<b>Dilution</b>	WB 1:500-2000
<b>Concentration</b>	1 mg/ml
<b>Purity</b>	≥90%
<b>Storage Stability</b>	-20°C/1 year
<b>Synonyms</b>	RPL34; 60S ribosomal protein L34
<b>Observed Band</b>	13kD
<b>Cell Pathway</b>	Cytoplasm, cytosol . Cytoplasm . Endoplasmic reticulum . Detected on cytosolic polysomes (PubMed:25957688). Detected in ribosomes that are associated with the rough endoplasmic reticulum (By similarity). .
<b>Tissue Specificity</b>	Bone,Epithelium,Eye,Ovary,
<b>Function</b>	similarity:Belongs to the ribosomal protein L34e family.,
<b>Background</b>	Ribosomes, the organelles that catalyze protein synthesis, consist of a small 40S subunit and a large 60S subunit. Together these subunits are composed of 4 RNA species and approximately 80 structurally distinct proteins. This gene encodes a ribosomal protein that is a component of the 60S subunit. The protein belongs to the L34E family of ribosomal proteins. It is located in the cytoplasm. This gene originally was thought to be located at 17q21, but it has been mapped to 4q. Overexpression of this gene has been observed in some cancer cells. Alternative

**Nanjing BYabscience technology Co.,Ltd**



splicing results in multiple transcript variants, all encoding the same isoform. As is typical for genes encoding ribosomal proteins, there are multiple processed pseudogenes of this gene dispersed through the genome. [provided by RefSeq, Feb 2016],

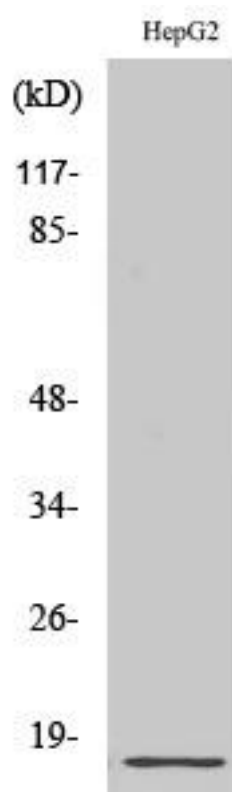
**matters needing attention**

Avoid repeated freezing and thawing!

**Usage suggestions**

This product can be used in immunological reaction related experiments. For more information, please consult technical personnel.

## Products Images



Western Blot analysis of various cells using Ribosomal Protein L34 Monoclonal Antibody