



# Ribosomal Protein L14 Monoclonal Antibody

Catalog No	BYmab-04129
Isotype	IgG
Reactivity	Human;Mouse;Rat
Applications	WB
Gene Name	RPL14
Protein Name	60S ribosomal protein L14
Immunogen	The antiserum was produced against synthesized peptide derived from human RPL14. AA range:71-120
Specificity	Ribosomal Protein L14 Monoclonal Antibody detects endogenous levels of Ribosomal Protein L14 protein.
Formulation	Liquid in PBS containing 50% glycerol, 0.5% BSA and 0.02% sodium azide.
Source	Monoclonal, Mouse,IgG
Purification	The antibody was affinity-purified from mouse antiserum by affinity-chromatography using epitope-specific immunogen.
Dilution	WB 1:500-2000
Concentration	1 mg/ml
Purity	≥90%
Storage Stability	-20°C/1 year
Synonyms	RPL14; 60S ribosomal protein L14; CAG-ISL 7
Observed Band	26kD
Cell Pathway	cytoplasm,cytosol,ribosome,cell-cell adherens junction,membrane,cytosolic large ribosomal subunit,extracellular exosome,
Tissue Specificity	Brain,Cervix carcinoma,Dermoid cancer,Epithelium,Kidney,Muscle,Ovary,Pancreas,Skin,
Function	polymorphism:The poly-Ala stretch is highly polymorphic.,similarity:Belongs to the ribosomal protein L14e family.,
Background	Ribosomes, the organelles that catalyze protein synthesis, consist of a small 40S subunit and a large 60S subunit. Together these subunits are composed of 4 RNA species and approximately 80 structurally distinct proteins. This gene encodes a ribosomal protein that is a component of the 60S subunit. The protein belongs to the L14E family of ribosomal proteins. It contains a basic region-leucine zipper (bZIP)-like domain. The protein is located in the cytoplasm. This gene contains a trinucleotide (GCT) repeat tract whose length is highly polymorphic; these triplet repeats result in a stretch of alanine residues in the encoded protein. Transcript

Nanjing BYabscience technology Co.,Ltd



variants utilizing alternative polyA signals and alternative 5'-terminal exons exist but all encode the same protein. As is typical for genes encoding ribosomal proteins, there are multiple processed pseudogenes of this gene dispersed through the genome.

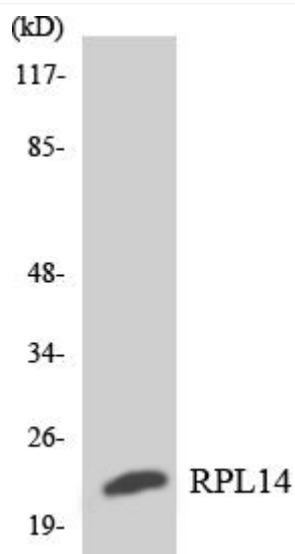
**matters needing attention**

Avoid repeated freezing and thawing!

**Usage suggestions**

This product can be used in immunological reaction related experiments. For more information, please consult technical personnel.

## Products Images



Western Blot analysis of various cells using Ribosomal Protein L14 Monoclonal Antibody