



RCL1 Monoclonal Antibody

Catalog No	BYmab-04113
Isotype	IgG
Reactivity	Human;Mouse;Rat
Applications	WB
Gene Name	RCL1
Protein Name	RNA 3'-terminal phosphate cyclase-like protein
Immunogen	The antiserum was produced against synthesized peptide derived from human RCL1. AA range:324-373
Specificity	RCL1 Monoclonal Antibody detects endogenous levels of RCL1 protein.
Formulation	Liquid in PBS containing 50% glycerol, 0.5% BSA and 0.02% sodium azide.
Source	Monoclonal, Mouse,IgG
Purification	The antibody was affinity-purified from mouse antiserum by affinity-chromatography using epitope-specific immunogen.
Dilution	WB 1:500-2000
Concentration	1 mg/ml
Purity	≥90%
Storage Stability	-20°C/1 year
Synonyms	RCL1; RNAC; RPC2; RPCL1; RTC2; HSPC338; RNA 3'-terminal phosphate cyclase-like protein
Observed Band	41kD
Cell Pathway	Nucleus, nucleolus .
Tissue Specificity	Eye,Seminom,Umbilical cord blood,
Function	function:Does not have cyclase activity. Plays a role in 40S-ribosomal-subunit biogenesis in the early pre-rRNA processing steps at sites A0, A1 and A2 that are required for proper maturation of the 18S RNA.,similarity:Belongs to the RNA 3'-terminal cyclase family. Type 2 subfamily.,
Background	function:Does not have cyclase activity. Plays a role in 40S-ribosomal-subunit biogenesis in the early pre-rRNA processing steps at sites A0, A1 and A2 that are required for proper maturation of the 18S RNA.,similarity:Belongs to the RNA 3'-terminal cyclase family. Type 2 subfamily.,

Nanjing BYabscience technology Co.,Ltd



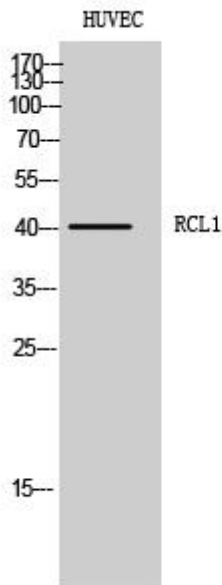
matters needing attention

Avoid repeated freezing and thawing!

Usage suggestions

This product can be used in immunological reaction related experiments. For more information, please consult technical personnel.

Products Images



Western Blot analysis of various cells using RCL1 Monoclonal Antibody

Nanjing BYabs science technology Co.,Ltd

网址: www.njbybio.com

官方热线: 025-5229-8998

监督电话: 15950492658