



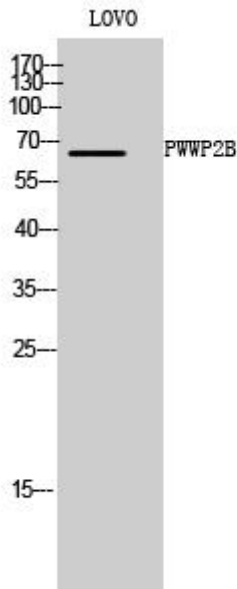
# PWWP2B Monoclonal Antibody

Catalog No	BYmab-04106
Isotype	IgG
Reactivity	Human;Rat;Mouse;
Applications	WB
Gene Name	PWWP2B
Protein Name	PWWP domain-containing protein 2B
Immunogen	The antiserum was produced against synthesized peptide derived from human PWWP2B. AA range:268-317
Specificity	PWWP2B Monoclonal Antibody detects endogenous levels of PWWP2B protein.
Formulation	Liquid in PBS containing 50% glycerol, 0.5% BSA and 0.02% sodium azide.
Source	Monoclonal, Mouse,IgG
Purification	The antibody was affinity-purified from mouse antiserum by affinity-chromatography using epitope-specific immunogen.
Dilution	WB 1:500-2000
Concentration	1 mg/ml
Purity	≥90%
Storage Stability	-20°C/1 year
Synonyms	PWWP2B; PWWP2; PWWP domain-containing protein 2B
Observed Band	64kD
Cell Pathway	nucleoplasm,
Tissue Specificity	Placenta,Uterus,
Function	PTM:Phosphorylated upon DNA damage, probably by ATM or ATR.,sequence caution:Translation N-terminally shortened.,similarity:Contains 1 PWWP domain.,
Background	PTM:Phosphorylated upon DNA damage, probably by ATM or ATR.,sequence caution:Translation N-terminally shortened.,similarity:Contains 1 PWWP domain.,
matters needing attention	Avoid repeated freezing and thawing!
Usage suggestions	This product can be used in immunological reaction related experiments. For more information, please consult technical personnel.

Nanjing BYabscience technology Co.,Ltd



## Products Images



Western Blot analysis of various cells using PWWP2B Monoclonal Antibody

Nanjing BYabs science technology Co.,Ltd

网址: [www.njbybio.com](http://www.njbybio.com)

官方热线: 025-5229-8998

监督电话: 15950492658