



# PRSS33 Monoclonal Antibody

Catalog No	BYmab-04101
Isotype	IgG
Reactivity	Human;Rat;Mouse;
Applications	WB
Gene Name	PRSS33
Protein Name	Serine protease 33
Immunogen	The antiserum was produced against synthesized peptide derived from human PRSS33. AA range:18-67
Specificity	PRSS33 Monoclonal Antibody detects endogenous levels of PRSS33 protein.
Formulation	Liquid in PBS containing 50% glycerol, 0.5% BSA and 0.02% sodium azide.
Source	Monoclonal, Mouse,IgG
Purification	The antibody was affinity-purified from mouse antiserum by affinity-chromatography using epitope-specific immunogen.
Dilution	WB 1:500-2000
Concentration	1 mg/ml
Purity	≥90%
Storage Stability	-20°C/1 year
Synonyms	PRSS33; Serine protease 33; Serine protease EOS
Observed Band	26kD
Cell Pathway	Secreted .
Tissue Specificity	Predominantly expressed in macrophages. Present in the spleen, small and large intestine, lung and brain (at protein level). Highly expressed in peripheral leukocytes, ovary, retina, spleen and stomach. Moderately expressed in thymus, uterus and platelets, as well as some brain tissues, such as thalamus and fetal brain.
Function	function:Serine protease that has amidolytic activity, cleaving its substrates before Arg residues.,induction:Up-regulated by phorbol ester PMA.,similarity:Belongs to the peptidase S1 family.,similarity:Contains 1 peptidase S1 domain.,tissue specificity:Predominantly expressed in macrophages. Present in the spleen, small and large intestine, lung and brain (at protein level). Highly expressed in peripheral leukocytes, ovary, retina, spleen and stomach. Moderately expressed in thymus, uterus and platelets, as well as some brain tissues, such as thalamus and fetal brain.,

Nanjing BYabscience technology Co.,Ltd



## Background

function: Serine protease that has amidolytic activity, cleaving its substrates before Arg residues., induction: Up-regulated by phorbol ester PMA., similarity: Belongs to the peptidase S1 family., similarity: Contains 1 peptidase S1 domain., tissue specificity: Predominantly expressed in macrophages. Present in the spleen, small and large intestine, lung and brain (at protein level). Highly expressed in peripheral leukocytes, ovary, retina, spleen and stomach. Moderately expressed in thymus, uterus and platelets, as well as some brain tissues, such as thalamus and fetal brain.,

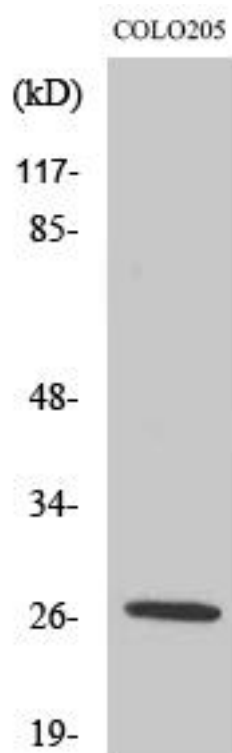
## matters needing attention

Avoid repeated freezing and thawing!

## Usage suggestions

This product can be used in immunological reaction related experiments. For more information, please consult technical personnel.

## Products Images



Western Blot analysis of various cells using PRSS33 Monoclonal Antibody