



# PI-9 Monoclonal Antibody

Catalog No	BYmab-04084
Isotype	IgG
Reactivity	Human;Mouse;Rat
Applications	WB
Gene Name	SERPINB9
Protein Name	Serpin B9
Immunogen	The antiserum was produced against synthesized peptide derived from human SERPINB9. AA range:241-290
Specificity	PI-9 Monoclonal Antibody detects endogenous levels of PI-9 protein.
Formulation	Liquid in PBS containing 50% glycerol, 0.5% BSA and 0.02% sodium azide.
Source	Monoclonal, Mouse,IgG
Purification	The antibody was affinity-purified from mouse antiserum by affinity-chromatography using epitope-specific immunogen.
Dilution	WB 1:500-2000
Concentration	1 mg/ml
Purity	≥90%
Storage Stability	-20°C/1 year
Synonyms	SERPINB9; PI9; Serpin B9; Cytoplasmic antiproteinase 3; CAP-3; CAP3; Peptidase inhibitor 9; PI-9
Observed Band	40kD
Cell Pathway	Cytoplasm.
Tissue Specificity	Bone marrow,Human esophagus tumor,Placenta,Testis,
Function	function:Granzyme B inhibitor.,similarity:Belongs to the serpin family.,similarity:Belongs to the serpin family. Ov-serpin subfamily.,
Background	This gene encodes a member of the serine protease inhibitor family which are also known as serpins. The encoded protein belongs to a subfamily of intracellular serpins. This protein inhibits the activity of the effector molecule granzyme B. Overexpression of this protein may prevent cytotoxic T-lymphocytes from eliminating certain tumor cells. A pseudogene of this gene is found on chromosome 6. [provided by RefSeq, Mar 2012],

Nanjing BYabscience technology Co.,Ltd

网址: [www.njbybio.com](http://www.njbybio.com)

官方热线: 025-5229-8998

监督电话: 15950492658



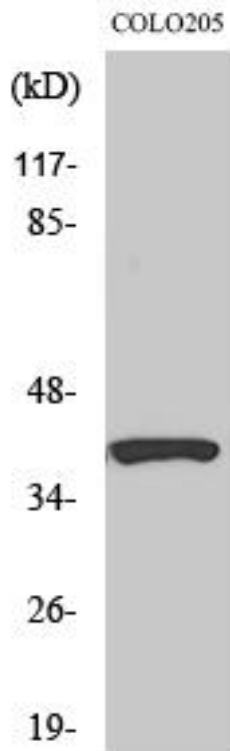
**matters needing attention**

Avoid repeated freezing and thawing!

**Usage suggestions**

This product can be used in immunological reaction related experiments. For more information, please consult technical personnel.

## Products Images



Western Blot analysis of various cells using PI-9 Monoclonal Antibody