



# PHAPI2 Monoclonal Antibody

<b>Catalog No</b>	BYmab-04077
<b>Isotype</b>	IgG
<b>Reactivity</b>	Human;Mouse;Rat
<b>Applications</b>	WB
<b>Gene Name</b>	ANP32B
<b>Protein Name</b>	Acidic leucine-rich nuclear phosphoprotein 32 family member B
<b>Immunogen</b>	The antiserum was produced against synthesized peptide derived from human ANP32B. AA range:1-50
<b>Specificity</b>	PHAPI2 Monoclonal Antibody detects endogenous levels of PHAPI2 protein.
<b>Formulation</b>	Liquid in PBS containing 50% glycerol, 0.5% BSA and 0.02% sodium azide.
<b>Source</b>	Monoclonal, Mouse,IgG
<b>Purification</b>	The antibody was affinity-purified from mouse antiserum by affinity-chromatography using epitope-specific immunogen.
<b>Dilution</b>	WB 1:500-2000
<b>Concentration</b>	1 mg/ml
<b>Purity</b>	≥90%
<b>Storage Stability</b>	-20°C/1 year
<b>Synonyms</b>	ANP32B; APRIL; PHAPI2; Acidic leucine-rich nuclear phosphoprotein 32 family member B; Acidic protein rich in leucines; Putative HLA-DR-associated protein I-2; PHAPI2; Silver-stainable protein SSP29
<b>Observed Band</b>	29kD
<b>Cell Pathway</b>	[Isoform 1]: Nucleus . Cytoplasm . Accumulates in the nuclei at the S phase. . ; [Isoform 2]: Cytoplasm. Lacks a nuclear localization signal.
<b>Tissue Specificity</b>	Expressed in heart, lung, pancreas, prostate and in spleen, thymus and placenta.
<b>Function</b>	function:Multifunctional protein working as a cell cycle progression factor as well as a cell survival factor. Required for the progression from the G1 to the S phase. Anti-apoptotic protein which functions as a caspase-3 inhibitor. Has no phosphatase 2A (PP2A) inhibitor activity.,similarity:Belongs to the ANP32 family.,similarity:Contains 4 LRR (leucine-rich) repeats.,subcellular location:Accumulates in the nuclei at the S phase.,tissue specificity:Expressed in heart, lung, pancreas, prostate and in spleen, thymus and placenta.,

**Nanjing BYabscience technology Co.,Ltd**

网址: [www.njbybio.com](http://www.njbybio.com)

官方热线: 025-5229-8998

监督电话: 15950492658



## Background

function: Multifunctional protein working as a cell cycle progression factor as well as a cell survival factor. Required for the progression from the G1 to the S phase. Anti-apoptotic protein which functions as a caspase-3 inhibitor. Has no phosphatase 2A (PP2A) inhibitor activity., similarity: Belongs to the ANP32 family., similarity: Contains 4 LRR (leucine-rich) repeats., subcellular location: Accumulates in the nuclei at the S phase., tissue specificity: Expressed in heart, lung, pancreas, prostate and in spleen, thymus and placenta.,

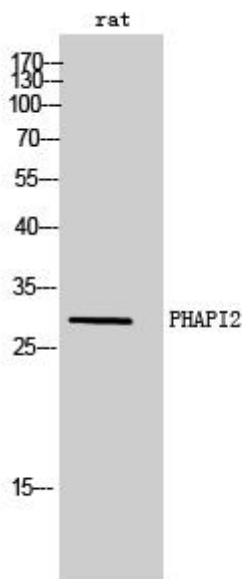
## matters needing attention

Avoid repeated freezing and thawing!

## Usage suggestions

This product can be used in immunological reaction related experiments. For more information, please consult technical personnel.

## Products Images



Western Blot analysis of various cells using PHAPI2 Monoclonal Antibody