



NDRG2 Monoclonal Antibody

Catalog No	BYmab-04032
Isotype	IgG
Reactivity	Human;Mouse;Rat
Applications	WB
Gene Name	NDRG2
Protein Name	Protein NDRG2
Immunogen	Synthesized peptide derived from NDRG2 . at AA range: 10-90
Specificity	NDRG2 Monoclonal Antibody detects endogenous levels of NDRG2 protein.
Formulation	Liquid in PBS containing 50% glycerol, 0.5% BSA and 0.02% sodium azide.
Source	Monoclonal, Mouse,IgG
Purification	The antibody was affinity-purified from mouse antiserum by affinity-chromatography using epitope-specific immunogen.
Dilution	WB 1:500-2000
Concentration	1 mg/ml
Purity	≥90%
Storage Stability	-20°C/1 year
Synonyms	NDRG2; KIAA1248; SYLD; Protein NDRG2; N-myc downstream-regulated gene 2 protein; Protein Syld709613
Observed Band	40kD
Cell Pathway	Cytoplasm. Cytoplasm, perinuclear region. Cell projection, growth cone . In neurons, seems to concentrate at axonal growth cone. Perinuclear in neurons (By similarity). .
Tissue Specificity	Highly expressed in brain, heart, skeletal muscle and salivary gland, and moderately in kidney and liver. Expressed in dendritic cells, but not in other blood cells. Expression levels are low in pancreatic and liver cancer tissues; absent in meningioma. Expressed in low-grade gliomas but present at low levels in glioblastoma. Isoform 1 and isoform 2 are present in brain neurons and up-regulated in Alzheimer disease (at protein level).
Function	developmental stage:Specifically expressed during dendritic cell differentiation (in vitro). Expression is low in fetal brain and increases during brain postnatal development.,disease:Found in pathological brain lesions of Alzheimer disease.,disease:Not expressed or strongly down-regulated in various cancer types, such as astrocytoma, meningioma, liver cancer and pancreatic cancer.,function:May be involved in dendritic cell and neuron differentiation. May

Nanjing BYabscience technology Co.,Ltd



have anti-tumor activity.,similarity:Belongs to the NDRG family.,subcellular location:Perinuclear in neurons.,tissue specificity:Highly expressed in brain, heart, skeletal muscle and salivary gland, and moderately in kidney and liver. Expressed in dendritic cells, but not in other blood cells. Generally not expressed in tumor cell lines. Isoforms 1 and 2 are present in brain neurons and up-regulated in Alzheimer disease (at protein leve

Background

This gene is a member of the N-myc downregulated gene family which belongs to the alpha/beta hydrolase superfamily. The protein encoded by this gene is a cytoplasmic protein that may play a role in neurite outgrowth. This gene may be involved in glioblastoma carcinogenesis. Several alternatively spliced transcript variants of this gene have been described, but the full-length nature of some of these variants has not been determined. [provided by RefSeq, Jul 2008],

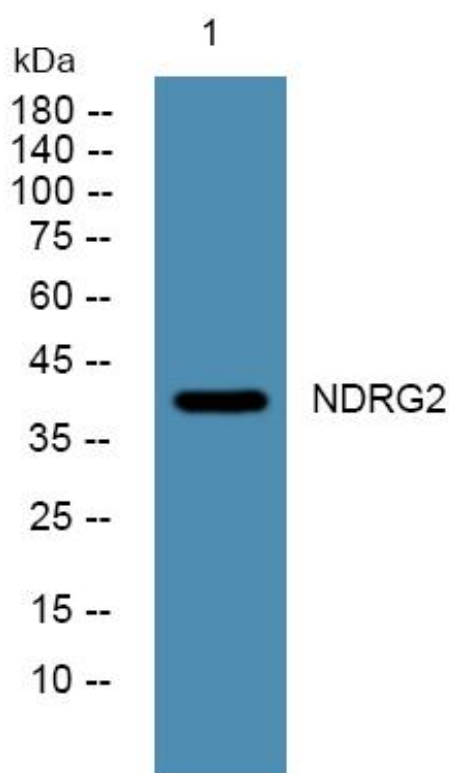
matters needing attention

Avoid repeated freezing and thawing!

Usage suggestions

This product can be used in immunological reaction related experiments. For more information, please consult technical personnel.

Products Images



Western Blot analysis of various cells using NDRG2 Monoclonal Antibody