



# MRP-S9 Monoclonal Antibody

|                    |   |
|--------------------|---|
| Catalog No         | BYmab-04023   |
| Isotype            | IgG   |
| Reactivity         | Human;Mouse;Rat   |
| Applications       | WB  |
| Gene Name          | MRPS9   |
| Protein Name       | 28S ribosomal protein S9 mitochondrial  |
| Immunogen          | The antiserum was produced against synthesized peptide derived from human MRPS9. AA range:91-140  |
| Specificity        | MRP-S9 Monoclonal Antibody detects endogenous levels of MRP-S9 protein.   |
| Formulation        | Liquid in PBS containing 50% glycerol, 0.5% BSA and 0.02% sodium azide.   |
| Source             | Monoclonal, Mouse,IgG   |
| Purification       | The antibody was affinity-purified from mouse antiserum by affinity-chromatography using epitope-specific immunogen.  |
| Dilution           | WB 1:500-2000   |
| Concentration      | 1 mg/ml   |
| Purity             | ≥90%  |
| Storage Stability  | -20°C/1 year  |
| Synonyms           | MRPS9; RPMS9; 28S ribosomal protein S9; mitochondrial; MRP-S9; S9mt   |
| Observed Band      | 40kD  |
| Cell Pathway       | Mitochondrion .   |
| Tissue Specificity | Skin,   |
| Function           | similarity:Belongs to the ribosomal protein S9P family.,subunit:Component of the mitochondrial ribosome small subunit (28S) which comprises a 12S rRNA and about 30 distinct proteins.,   |
| Background         | Mammalian mitochondrial ribosomal proteins are encoded by nuclear genes and help in protein synthesis within the mitochondrion. Mitochondrial ribosomes (mitoribosomes) consist of a small 28S subunit and a large 39S subunit. They have an estimated 75% protein to rRNA composition compared to prokaryotic ribosomes, where this ratio is reversed. Another difference between mammalian mitoribosomes and prokaryotic ribosomes is that the latter contain a 5S rRNA. Among different species, the proteins comprising the mitoribosome differ greatly |

Nanjing BYabscience technology Co.,Ltd



in sequence, and sometimes in biochemical properties, which prevents easy recognition by sequence homology. This gene encodes a 28S subunit protein. [provided by RefSeq, Jul 2008],

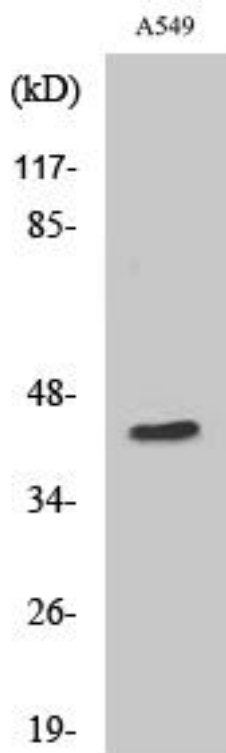
**matters needing attention**

Avoid repeated freezing and thawing!

**Usage suggestions**

This product can be used in immunological reaction related experiments. For more information, please consult technical personnel.

## Products Images



Western Blot analysis of various cells using MRP-S9 Monoclonal Antibody