



# MRP-L49 Monoclonal Antibody

<b>Catalog No</b>	BYmab-03998
<b>Isotype</b>	IgG
<b>Reactivity</b>	Human;Rat;Mouse;
<b>Applications</b>	WB
<b>Gene Name</b>	MRPL49
<b>Protein Name</b>	39S ribosomal protein L49 mitochondrial
<b>Immunogen</b>	Synthesized peptide derived from MRP-L49 . at AA range: 10-90
<b>Specificity</b>	MRP-L49 Monoclonal Antibody detects endogenous levels of MRP-L49 protein.
<b>Formulation</b>	Liquid in PBS containing 50% glycerol, 0.5% BSA and 0.02% sodium azide.
<b>Source</b>	Monoclonal, Mouse,IgG
<b>Purification</b>	The antibody was affinity-purified from mouse antiserum by affinity-chromatography using epitope-specific immunogen.
<b>Dilution</b>	WB 1:500-2000
<b>Concentration</b>	1 mg/ml
<b>Purity</b>	≥90%
<b>Storage Stability</b>	-20°C/1 year
<b>Synonyms</b>	MRPL49; C11orf4; NOF1; OK/SW-cl.67; 39S ribosomal protein L49; mitochondrial; L49mt; MRP-L49; Neighbor of FAU; NOF; Protein NOF1
<b>Observed Band</b>	19kD
<b>Cell Pathway</b>	Mitochondrion .
<b>Tissue Specificity</b>	Ubiquitous.
<b>Function</b>	similarity:Belongs to the ribosomal protein L49em family.,tissue specificity:Ubiquitous.,
<b>Background</b>	Mammalian mitochondrial ribosomal proteins are encoded by nuclear genes and help in protein synthesis within the mitochondrion. Mitochondrial ribosomes (mitoribosomes) consist of a small 28S subunit and a large 39S subunit. They have an estimated 75% protein to rRNA composition compared to prokaryotic ribosomes, where this ratio is reversed. Another difference between mammalian mitoribosomes and prokaryotic ribosomes is that the latter contain a 5S rRNA. Among different species, the proteins comprising the mitoribosome differ greatly in sequence, and sometimes in biochemical properties, which prevents easy

**Nanjing BYabscience technology Co.,Ltd**



recognition by sequence homology. Pseudogenes corresponding to this gene are found on chromosomes 5q and 8p. [provided by RefSeq, May 2011],

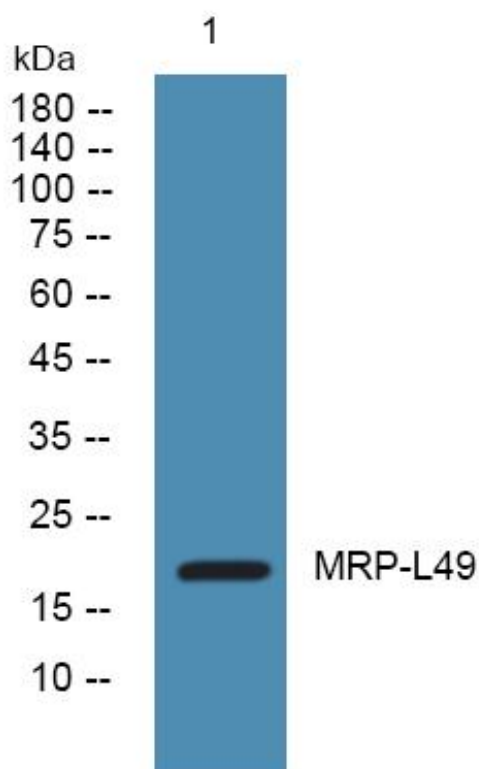
**matters needing attention**

Avoid repeated freezing and thawing!

**Usage suggestions**

This product can be used in immunological reaction related experiments. For more information, please consult technical personnel.

## Products Images



Western Blot analysis of various cells using MRP-L49 Monoclonal Antibody