



MRP-L39 Monoclonal Antibody

| | |
|--------------------|--|
| Catalog No | BYmab-03990 |
| Isotype | IgG |
| Reactivity | Human;Rat;Mouse; |
| Applications | WB |
| Gene Name | MRPL39 |
| Protein Name | 39S ribosomal protein L39 mitochondrial |
| Immunogen | The antiserum was produced against synthesized peptide derived from human MRPL39. AA range:289-338 |
| Specificity | MRP-L39 Monoclonal Antibody detects endogenous levels of MRP-L39 protein. |
| Formulation | Liquid in PBS containing 50% glycerol, 0.5% BSA and 0.02% sodium azide. |
| Source | Monoclonal, Mouse,IgG |
| Purification | The antibody was affinity-purified from mouse antiserum by affinity-chromatography using epitope-specific immunogen. |
| Dilution | WB 1:500-2000 |
| Concentration | 1 mg/ml |
| Purity | ≥90% |
| Storage Stability | -20°C/1 year |
| Synonyms | MRPL39; C21orf92; MRPL5; RPML5; MSTP003; PRED22; 39S ribosomal protein L39; mitochondrial; L39mt; MRP-L39; 39S ribosomal protein L5, mitochondrial; L5mt; MRP-L5 |
| Observed Band | 39kD |
| Cell Pathway | Mitochondrion . |
| Tissue Specificity | Isoform 1 is ubiquitously expressed. Isoform 2 is heart-specific. |
| Function | caution:It is uncertain whether Met-1 or Met-6 is the initiator.,caution:Ref.1 indicates C21orf8 as a synonym for this orf, this is incorrect, C21orf8 is already assigned to another chromosome 21 region.,similarity:To the N-terminal of threonyl-tRNA synthetases.,tissue specificity:Ubiquitous (isoform 1); heart-specific (isoform 2)., |
| Background | Mammalian mitochondrial ribosomal proteins are encoded by nuclear genes and help in protein synthesis within the mitochondrion. Mitochondrial ribosomes (mitoribosomes) consist of a small 28S subunit and a large 39S subunit. They |

Nanjing BYabscience technology Co.,Ltd



have an estimated 75% protein to rRNA composition compared to prokaryotic ribosomes, where this ratio is reversed. Another difference between mammalian mitoribosomes and prokaryotic ribosomes is that the latter contain a 5S rRNA. Among different species, the proteins comprising the mitoribosome differ greatly in sequence, and sometimes in biochemical properties, which prevents easy recognition by sequence homology. This gene encodes a 39S subunit protein. Two transcript variants encoding distinct isoforms have been described. A pseudogene corresponding to this gene is found on chromosome 5q. [provided by RefSeq, Jul 2008],

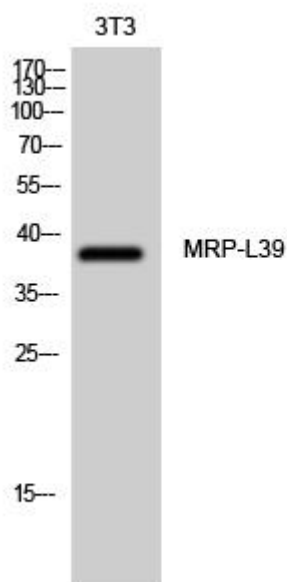
matters needing attention

Avoid repeated freezing and thawing!

Usage suggestions

This product can be used in immunological reaction related experiments. For more information, please consult technical personnel.

Products Images



Western Blot analysis of various cells using MRP-L39 Monoclonal Antibody