



# MRP-L22 Monoclonal Antibody

Catalog No	BYmab-03984
Isotype	IgG
Reactivity	Human;Mouse;Rat
Applications	WB
Gene Name	MRPL22
Protein Name	39S ribosomal protein L22 mitochondrial
Immunogen	The antiserum was produced against synthesized peptide derived from human MRPL22. AA range:91-140
Specificity	MRP-L22 Monoclonal Antibody detects endogenous levels of MRP-L22 protein.
Formulation	Liquid in PBS containing 50% glycerol, 0.5% BSA and 0.02% sodium azide.
Source	Monoclonal, Mouse,IgG
Purification	The antibody was affinity-purified from mouse antiserum by affinity-chromatography using epitope-specific immunogen.
Dilution	WB 1:500-2000
Concentration	1 mg/ml
Purity	≥90%
Storage Stability	-20°C/1 year
Synonyms	MRPL22; MRPL25; RPML25; HSPC158; 39S ribosomal protein L22; mitochondrial; L22mt; MRP-L22; 39S ribosomal protein L25, mitochondrial; L25mt; MRP-L25
Observed Band	24kD
Cell Pathway	Mitochondrion .
Tissue Specificity	Carcinoma,Retina,Skin,Testis,Umbilical cord blood,
Function	similarity:Belongs to the ribosomal protein L22P family.,
Background	Mammalian mitochondrial ribosomal proteins are encoded by nuclear genes and help in protein synthesis within the mitochondrion. Mitochondrial ribosomes (mitoribosomes) consist of a small 28S subunit and a large 39S subunit. They have an estimated 75% protein to rRNA composition compared to prokaryotic ribosomes, where this ratio is reversed. Another difference between mammalian mitoribosomes and prokaryotic ribosomes is that the latter contain a 5S rRNA.

Nanjing BYabscience technology Co.,Ltd



Among different species, the proteins comprising the mitoribosome differ greatly in sequence, and sometimes in biochemical properties, which prevents easy recognition by sequence homology. This gene encodes a 39S subunit protein that belongs to the L22 ribosomal protein family. A pseudogene corresponding to this gene is found on chromosome 4q. Two transcript variants encoding different isoforms have been found for this gene. [provide

**matters needing attention**

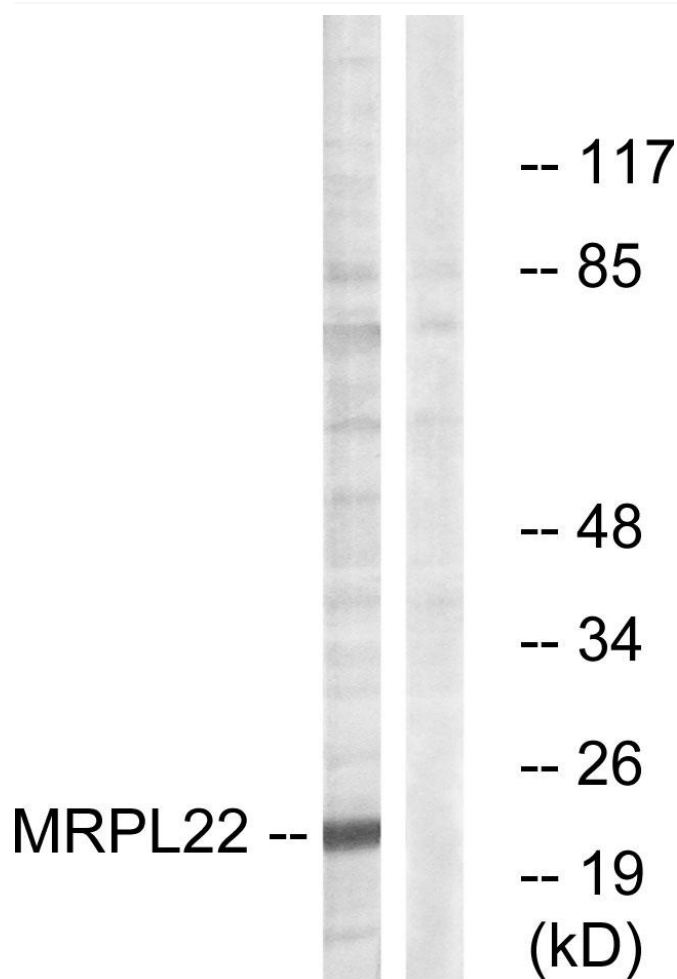
Avoid repeated freezing and thawing!

**Usage suggestions**

This product can be used in immunological reaction related experiments. For more information, please consult technical personnel.

## Products Images

Western Blot analysis of various cells using MRP-L22 Monoclonal Antibody



Nanjing BYabs science technology Co.,Ltd

网址: [www.njbybio.com](http://www.njbybio.com)

官方热线: 025-5229-8998

监督电话: 15950492658