



# MRP2 Monoclonal Antibody

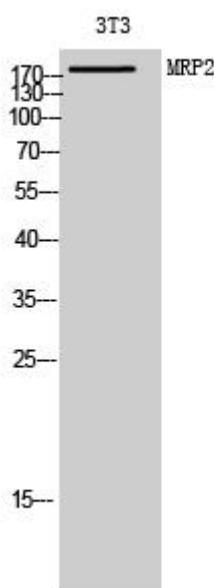
Catalog No	BYmab-03970
Isotype	IgG
Reactivity	Human;Rat;Mouse;
Applications	WB
Gene Name	ABCC2
Protein Name	Canalicular multispecific organic anion transporter 1
Immunogen	The antiserum was produced against synthesized peptide derived from human ABCC2. AA range:991-1040
Specificity	MRP2 Monoclonal Antibody detects endogenous levels of MRP2 protein.
Formulation	Liquid in PBS containing 50% glycerol, 0.5% BSA and 0.02% sodium azide.
Source	Monoclonal, Mouse,IgG
Purification	The antibody was affinity-purified from mouse antiserum by affinity-chromatography using epitope-specific immunogen.
Dilution	WB 1:500-2000
Concentration	1 mg/ml
Purity	≥90%
Storage Stability	-20°C/1 year
Synonyms	ABCC2; CMOAT; CMOAT1; CMRP; MRP2; Canalicular multispecific organic anion transporter 1; ATP-binding cassette sub-family C member 2; Canalicular multidrug resistance protein; Multidrug resistance-associated protein 2
Observed Band	190-250kD
Cell Pathway	Apical cell membrane ; Multi-pass membrane protein .
Tissue Specificity	Expressed by polarized cells in liver, kidney and intestine. The highest expression is found in liver.
Function	disease:Defects in ABCC2 are the cause of Dubin-Johnson syndrome (DJS) [MIM:237500]. DJS is an autosomal recessive disorder characterized by conjugated hyperbilirubinemia, an increase in the urinary excretion of coproporphyrin isomer I, deposition of melanin-like pigment in hepatocytes, and prolonged retention of sulfobromophthalein, but otherwise normal liver function.,function:Mediates hepatobiliary excretion of numerous organic anions. May function as a cellular cisplatin transporter.,similarity:Belongs to the ABC transporter family. Conjugate transporter (TC 3.A.1.208) subfamily.,similarity:Contains 2 ABC transmembrane type-1

Nanjing BYabscience technology Co.,Ltd



	domains.,similarity:Contains 2 ABC transporter domains.,tissue specificity:Found on the apical membrane of polarized cells in liver, kidney and intestine. The highest expression is found in liver.,
<b>Background</b>	The protein encoded by this gene is a member of the superfamily of ATP-binding cassette (ABC) transporters. ABC proteins transport various molecules across extra- and intra-cellular membranes. ABC genes are divided into seven distinct subfamilies (ABC1, MDR/TAP, MRP, ALD, OABP, GCN20, White). This protein is a member of the MRP subfamily which is involved in multi-drug resistance. This protein is expressed in the canalicular (apical) part of the hepatocyte and functions in biliary transport. Substrates include anticancer drugs such as vinblastine; therefore, this protein appears to contribute to drug resistance in mammalian cells. Several different mutations in this gene have been observed in patients with Dubin-Johnson syndrome (DJS), an autosomal recessive disorder characterized by conjugated hyperbilirubinemia. [provided by RefSeq, Jul 2008],
<b>matters needing attention</b>	Avoid repeated freezing and thawing!
<b>Usage suggestions</b>	This product can be used in immunological reaction related experiments. For more information, please consult technical personnel.

## Products Images



Western Blot analysis of various cells using MRP2 Monoclonal Antibody