



KLHL3 Monoclonal Antibody

Catalog No	BYmab-03944
Isotype	IgG
Reactivity	Human;Rat;Mouse;
Applications	WB
Gene Name	KLHL3
Protein Name	Kelch-like protein 3
Immunogen	The antiserum was produced against synthesized peptide derived from human KLHL3. AA range:10-59
Specificity	KLHL3 Monoclonal Antibody detects endogenous levels of KLHL3 protein.
Formulation	Liquid in PBS containing 50% glycerol, 0.5% BSA and 0.02% sodium azide.
Source	Monoclonal, Mouse,IgG
Purification	The antibody was affinity-purified from mouse antiserum by affinity-chromatography using epitope-specific immunogen.
Dilution	WB 1:500-2000
Concentration	1 mg/ml
Purity	≥90%
Storage Stability	-20°C/1 year
Synonyms	KLHL3; KIAA1129; Kelch-like protein 3
Observed Band	65kD
Cell Pathway	Cytoplasm, cytoskeleton . Cytoplasm, cytosol .
Tissue Specificity	Widely expressed.
Function	function:Probable substrate-specific adapter of an E3 ubiquitin-protein ligase complex which mediates the ubiquitination and subsequent proteasomal degradation of target proteins.,pathway:Protein modification; protein ubiquitination.,similarity:Contains 1 BTB (POZ) domain.,similarity:Contains 6 Kelch repeats.,subunit:Interacts with cul3.,tissue specificity:Seems to be expressed in a variety of tissues.,
Background	This gene is ubiquitously expressed and encodes a full-length protein which has an N-terminal BTB domain followed by a BACK domain and six kelch-like repeats in the C-terminus. These kelch-like repeats promote substrate ubiquitination of bound proteins via interaction of the BTB domain with the CUL3 (cullin 3)

Nanjing BYabscience technology Co.,Ltd



component of a cullin-RING E3 ubiquitin ligase (CRL) complex. Mutations in this gene cause pseudohypoaldosteronism type IID (PHA2D); a rare Mendelian syndrome featuring hypertension, hyperkalaemia and metabolic acidosis. Alternative splicing results in multiple transcript variants encoding distinct isoforms. [provided by RefSeq, Mar 2012],

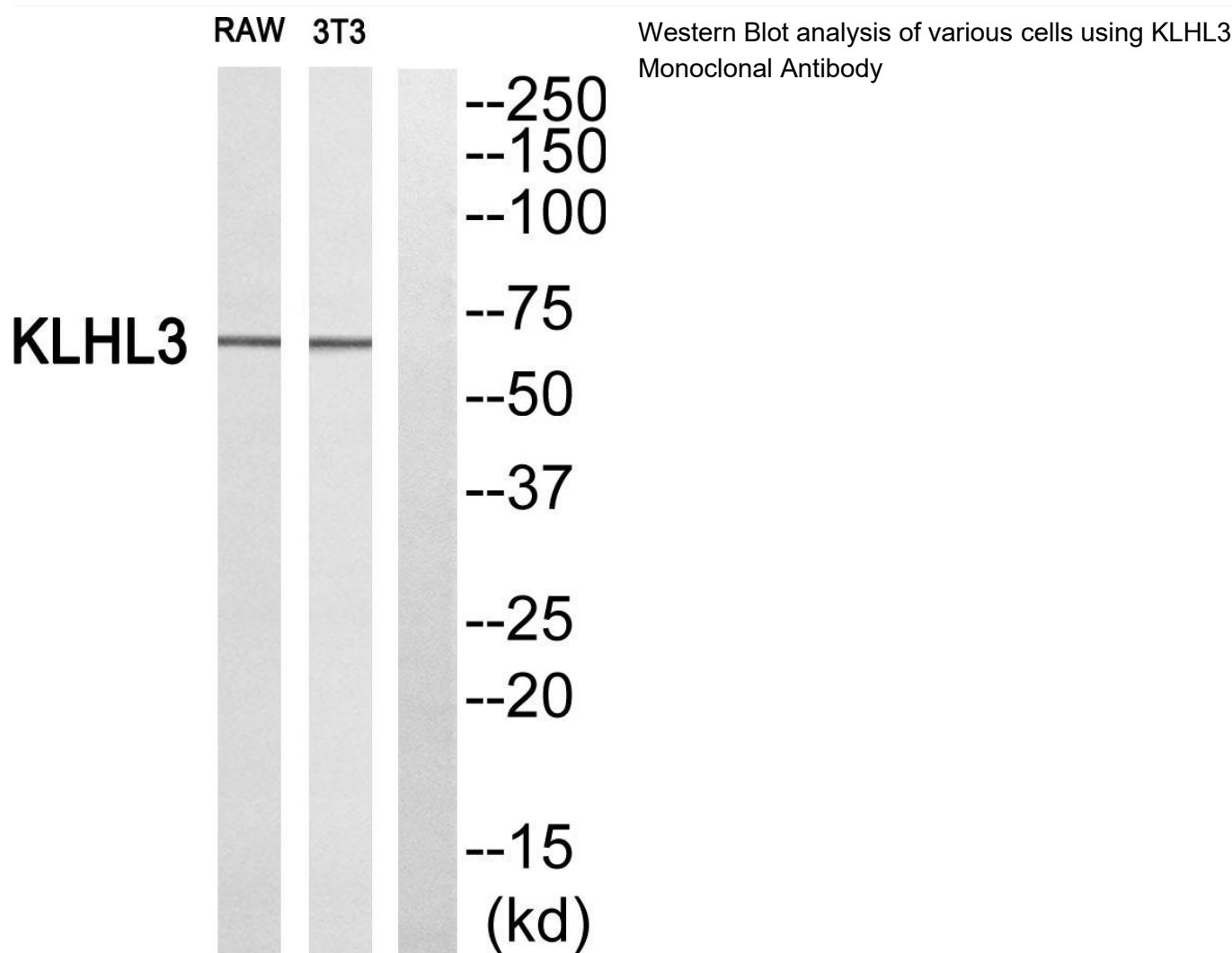
matters needing attention

Avoid repeated freezing and thawing!

Usage suggestions

This product can be used in immunological reaction related experiments. For more information, please consult technical personnel.

Products Images



Nanjing BYabscience technology Co.,Ltd

网址: www.njbybio.com

官方热线: 025-5229-8998

监督电话: 15950492658