



IFI-16 Monoclonal Antibody

Catalog No	BYmab-03927
Isotype	IgG
Reactivity	Human;Rat;Mouse;
Applications	WB
Gene Name	IFI16
Protein Name	Gamma-interferon-inducible protein 16
Immunogen	The antiserum was produced against synthesized peptide derived from human IFI16. AA range:731-780
Specificity	IFI-16 Monoclonal Antibody detects endogenous levels of IFI-16 protein.
Formulation	Liquid in PBS containing 50% glycerol, 0.5% BSA and 0.02% sodium azide.
Source	Monoclonal, Mouse,IgG
Purification	The antibody was affinity-purified from mouse antiserum by affinity-chromatography using epitope-specific immunogen.
Dilution	WB 1:500-2000
Concentration	1 mg/ml
Purity	≥90%
Storage Stability	-20°C/1 year
Synonyms	IFI16; IFNGIP1; Gamma-interferon-inducible protein 16; Ifi-16; Interferon-inducible myeloid differentiation transcriptional activator
Observed Band	88kD
Cell Pathway	Nucleus. Cytoplasm. Cellular distribution is dependent on the acetylation status of the multipartite nuclear localization signal (NLS); NLS acetylation promotes cytoplasmic localization. Localizes in the nucleus during human herpes simplex virus 1 (HHV-1) infection.
Tissue Specificity	Expressed in peripheral blood leukocytes, fibroblasts and lymphoid cells. Present in myeloid precursors (CD34+) and throughout monocyte development, but its expression is down-regulated in erythroid and polymorphonuclear precursor cells. Present in prostate, ovary and breast (at protein level).
Function	function:May function as a transcriptional repressor. Could have a role in the regulation of hematopoietic differentiation through activation of unknown target genes. Controls cellular proliferation by modulating the functions of cell cycle regulatory factors including p53/TP53 and the retinoblastoma protein. May be involved in the senescence of prostate epithelial cells.,induction:Strongly induced by gamma interferon and, to a lesser extent, by alpha interferon. In HL-60 cells,

Nanjing BYabscience technology Co.,Ltd



maximum induction by gamma-interferon occurs within 12 hours whereas, for alpha-interferon, only 10-fold induction was observed after 36 hours. Induced in vitro by dimethylsulfoxide, retinoic acid and 1,25 dihydroxyvitamin D3.,PTM:Isoform 3 seems to show a minor degree of complex carbohydrate addition.,PTM:Phosphorylated on Ser and Thr.,sequence caution:Intron retention.,similarity:Belongs to the HIN-200 family.,

Background

This gene encodes a member of the HIN-200 (hematopoietic interferon-inducible nuclear antigens with 200 amino acid repeats) family of cytokines. The encoded protein contains domains involved in DNA binding, transcriptional regulation, and protein-protein interactions. The protein localizes to the nucleoplasm and nucleoli, and interacts with p53 and retinoblastoma-1. It modulates p53 function, and inhibits cell growth in the Ras/Raf signaling pathway. Alternatively spliced transcript variants encoding different isoforms have been found for this gene. [provided by RefSeq, Apr 2011],

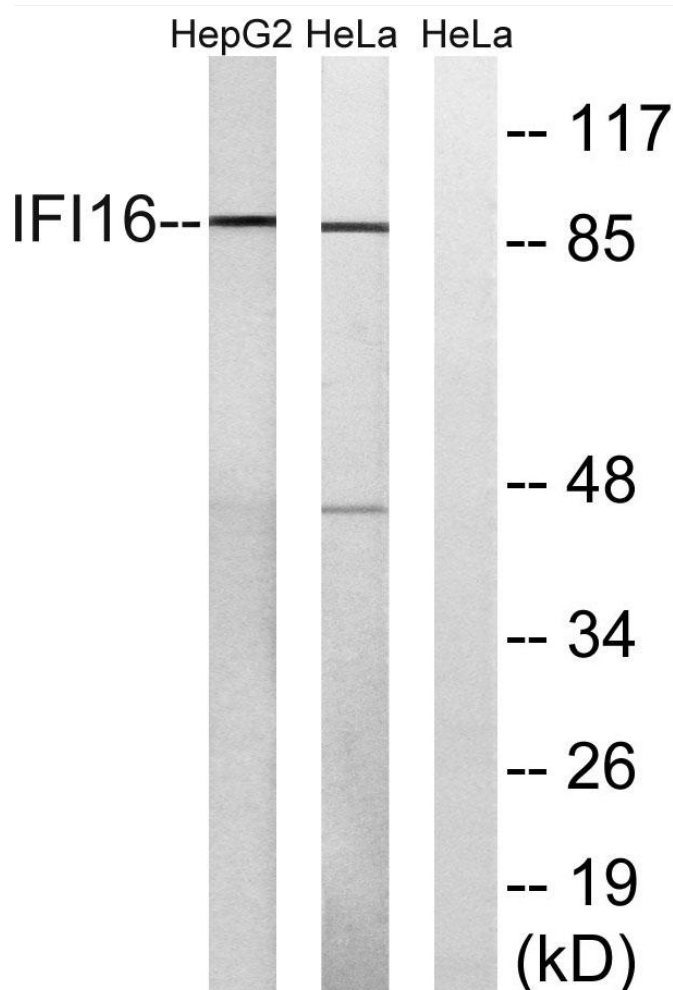
matters needing attention

Avoid repeated freezing and thawing!

Usage suggestions

This product can be used in immunological reaction related experiments. For more information, please consult technical personnel.

Products Images



Western Blot analysis of various cells using IFI-16 Monoclonal Antibody

Nanjing BYabs science technology Co.,Ltd