



# GPS2 Monoclonal Antibody

<b>Catalog No</b>	BYmab-03904
<b>Isotype</b>	IgG
<b>Reactivity</b>	Human;Mouse;Rat
<b>Applications</b>	WB
<b>Gene Name</b>	GPS2
<b>Protein Name</b>	G protein pathway suppressor 2
<b>Immunogen</b>	The antiserum was produced against synthesized peptide derived from human GPS2. AA range:11-60
<b>Specificity</b>	GPS2 Monoclonal Antibody detects endogenous levels of GPS2 protein.
<b>Formulation</b>	Liquid in PBS containing 50% glycerol, 0.5% BSA and 0.02% sodium azide.
<b>Source</b>	Monoclonal, Mouse,IgG
<b>Purification</b>	The antibody was affinity-purified from mouse antiserum by affinity-chromatography using epitope-specific immunogen.
<b>Dilution</b>	WB 1:500-2000
<b>Concentration</b>	1 mg/ml
<b>Purity</b>	≥90%
<b>Storage Stability</b>	-20°C/1 year
<b>Synonyms</b>	GPS2; G protein pathway suppressor 2; GPS-2
<b>Observed Band</b>	40kD
<b>Cell Pathway</b>	Nucleus . Mitochondrion . Cytoplasm, cytosol . Sumoylation regulates the subcellular location (PubMed:24943844). Relocates from the mitochondria to the nucleus following desumoylation, leading to mediate mitochondrial stress response (By similarity). .
<b>Tissue Specificity</b>	Widely expressed.
<b>Function</b>	function:Suppresses G-protein- and mitogen-activated protein kinase-mediated signal transduction.,sequence caution:Wrong choice of frame.,subunit:Component of the N-Cor repressor complex, at least composed of NCOR1, NCOR2, HDAC3, TBL1X, TBL1R, CORO2A and GPS2.,tissue specificity:Widely expressed.,
<b>Background</b>	This gene encodes a protein involved in G protein-mitogen-activated protein kinase (MAPK) signaling cascades. When overexpressed in mammalian cells, this gene could potentially suppress a RAS- and MAPK-mediated signal and interfere

**Nanjing BYabscience technology Co.,Ltd**



with JNK activity, suggesting that the function of this gene may be signal repression. The encoded protein is an integral subunit of the NCOR1-HDAC3 (nuclear receptor corepressor 1-histone deacetylase 3) complex, and it was shown that the complex inhibits JNK activation through this subunit and thus could potentially provide an alternative mechanism for hormone-mediated antagonism of AP1 (activator protein 1) function. [provided by RefSeq, Jul 2008],

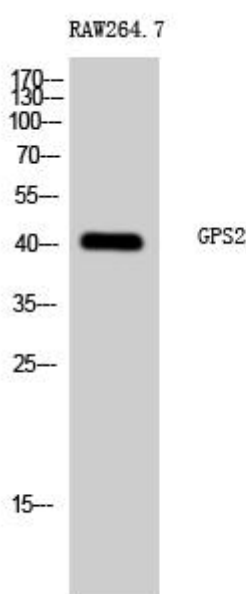
**matters needing attention**

Avoid repeated freezing and thawing!

**Usage suggestions**

This product can be used in immunological reaction related experiments. For more information, please consult technical personnel.

## Products Images



Western Blot analysis of various cells using GPS2 Monoclonal Antibody