



GCS- β -1 Monoclonal Antibody

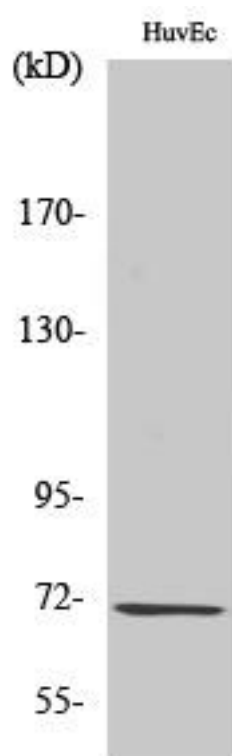
Catalog No	BYmab-03898
Isotype	IgG
Reactivity	Human;Mouse;Rat
Applications	WB
Gene Name	GUCY1B3
Protein Name	Guanylate cyclase soluble subunit beta-1
Immunogen	The antiserum was produced against synthesized peptide derived from human Guanylate Cyclase beta. AA range:10-59
Specificity	GCS- β -1 Monoclonal Antibody detects endogenous levels of GCS- β -1 protein.
Formulation	Liquid in PBS containing 50% glycerol, 0.5% BSA and 0.02% sodium azide.
Source	Monoclonal, Mouse,IgG
Purification	The antibody was affinity-purified from mouse antiserum by affinity-chromatography using epitope-specific immunogen.
Dilution	WB 1:500-2000
Concentration	1 mg/ml
Purity	$\geq 90\%$
Storage Stability	-20°C/1 year
Synonyms	GUCY1B3; GUC1B3; GUCSB3; GUCY1B1; Guanylate cyclase soluble subunit beta-1; GCS-beta-1; Guanylate cyclase soluble subunit beta-3; GCS-beta-3; Soluble guanylate cyclase small subunit
Observed Band	70kD
Cell Pathway	Cytoplasm .
Tissue Specificity	Detected in brain cortex and cerebellum (at protein level).
Function	catalytic activity:GTP = 3',5'-cyclic GMP + diphosphate.,cofactor:Binds 1 or 2 heme groups per heterodimer.,enzyme regulation:Activated by nitric oxide in the presence of magnesium or manganese ions.,miscellaneous:There are two types of guanylate cyclases: soluble forms and membrane-associated receptor forms.,similarity:Belongs to the adenylyl cyclase class-4/guanylyl cyclase family.,similarity:Contains 1 guanylate cyclase domain.,subunit:Heterodimer of an alpha and a beta chain.,

Nanjing BYabs science technology Co.,Ltd



Background	This gene encodes the beta subunit of the soluble guanylate cyclase (sGC), which catalyzes the conversion of GTP (guanosine triphosphate) to cGMP (cyclic guanosine monophosphate). The encoded protein contains an HNOX domain, which serves as a receptor for ligands such as nitric oxide, oxygen and nitrovasodilator drugs. Alternative splicing results in multiple transcript variants. [provided by RefSeq, May 2014],
matters needing attention	Avoid repeated freezing and thawing!
Usage suggestions	This product can be used in immunological reaction related experiments. For more information, please consult technical personnel.

Products Images



Western Blot analysis of various cells using GCS-β-1 Monoclonal Antibody