



GCS- α -1 Monoclonal Antibody

Catalog No	BYmab-03897
Isotype	IgG
Reactivity	Human;Mouse;Rat
Applications	WB
Gene Name	GUCY1A3
Protein Name	Guanylate cyclase soluble subunit alpha-3
Immunogen	The antiserum was produced against synthesized peptide derived from human GCS-alpha-1. AA range:374-423
Specificity	GCS- α -1 Monoclonal Antibody detects endogenous levels of GCS- α -1 protein.
Formulation	Liquid in PBS containing 50% glycerol, 0.5% BSA and 0.02% sodium azide.
Source	Monoclonal, Mouse,IgG
Purification	The antibody was affinity-purified from mouse antiserum by affinity-chromatography using epitope-specific immunogen.
Dilution	WB 1:500-2000
Concentration	1 mg/ml
Purity	$\geq 90\%$
Storage Stability	-20°C/1 year
Synonyms	GUCY1A3; GUC1A3; GUCSA3; GUCY1A1; Guanylate cyclase soluble subunit alpha-3; GCS-alpha-3; GCS-alpha-1; Soluble guanylate cyclase large subunit
Observed Band	77kD
Cell Pathway	Cytoplasm .
Tissue Specificity	Detected in brain cortex and lung (at protein level).
Function	catalytic activity:GTP = 3',5'-cyclic GMP + diphosphate.,enzyme regulation:Activated by nitric oxide in the presence of magnesium or manganese ions.,miscellaneous:There are two types of guanylate cyclases: soluble forms and membrane-associated receptor forms.,similarity:Belongs to the adenylyl cyclase class-4/guanylyl cyclase family.,similarity:Contains 1 guanylate cyclase domain.,subunit:Heterodimer of an alpha and a beta chain.,
Background	Soluble guanylate cyclases are heterodimeric proteins that catalyze the conversion of GTP to 3',5'-cyclic GMP and pyrophosphate. The protein encoded by this gene is an alpha subunit of this complex and it interacts with a beta subunit to form the guanylate cyclase enzyme, which is activated by

Nanjing BYabscience technology Co.,Ltd



nitric oxide. Several transcript variants encoding a few different isoforms have been found for this gene. [provided by RefSeq, Jan 2012],

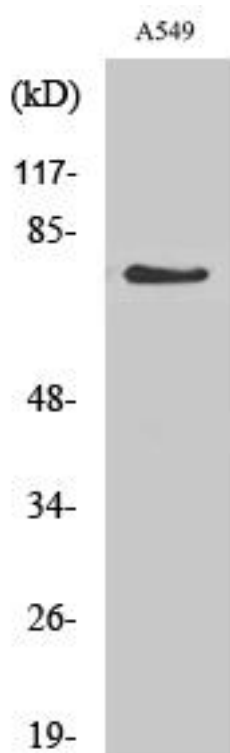
matters needing attention

Avoid repeated freezing and thawing!

Usage suggestions

This product can be used in immunological reaction related experiments. For more information, please consult technical personnel.

Products Images



Western Blot analysis of various cells using GCS- α -1 Monoclonal Antibody