



GCSc-γ Monoclonal Antibody

Catalog No	BYmab-03895
Isotype	IgG
Reactivity	Human;Mouse;Rat
Applications	WB
Gene Name	GCLC
Protein Name	Glutamate--cysteine ligase catalytic subunit
Immunogen	The antiserum was produced against synthesized peptide derived from human GCSc-gamma. AA range:266-315
Specificity	GCSc- γ Monoclonal Antibody detects endogenous levels of GCSc- γ protein.
Formulation	Liquid in PBS containing 50% glycerol, 0.5% BSA and 0.02% sodium azide.
Source	Monoclonal, Mouse,IgG
Purification	The antibody was affinity-purified from mouse antiserum by affinity-chromatography using epitope-specific immunogen.
Dilution	WB 1:500-2000
Concentration	1 mg/ml
Purity	≥90%
Storage Stability	-20°C/1 year
Synonyms	GCLC; GLCL; GLCLC; Glutamate--cysteine ligase catalytic subunit; GCS heavy chain; Gamma-ECS; Gamma-glutamylcysteine synthetase
Observed Band	73kD
Cell Pathway	cytosol,integral component of membrane,glutamate-cysteine ligase complex,
Tissue Specificity	Foreskin fibroblast,Hippocampus,Liver,Testis,Thalamus,
Function	catalytic activity:ATP + L-glutamate + L-cysteine = ADP + phosphate + gamma-L-glutamyl-L-cysteine.,disease:Defects in GCLC are the cause of hemolytic anemia [MIM:230450].,enzyme regulation:Feedback inhibition by glutathione.,pathway:Sulfur metabolism; glutathione biosynthesis; glutathione from L-cysteine and L-glutamate: step 1/2.,similarity:Belongs to the glutamate--cysteine ligase type 3 family.,subunit:Heterodimer of a catalytic heavy chain and a regulatory light chain.,
Background	Glutamate-cysteine ligase, also known as gamma-glutamylcysteine synthetase is the first rate-limiting enzyme of glutathione synthesis. The enzyme consists of two subunits, a heavy catalytic subunit and a light regulatory subunit. This locus

Nanjing BYabscience technology Co.,Ltd



encodes the catalytic subunit, while the regulatory subunit is derived from a different gene located on chromosome 1p22-p21. Mutations at this locus have been associated with hemolytic anemia due to deficiency of gamma-glutamylcysteine synthetase and susceptibility to myocardial infarction.[provided by RefSeq, Oct 2010],

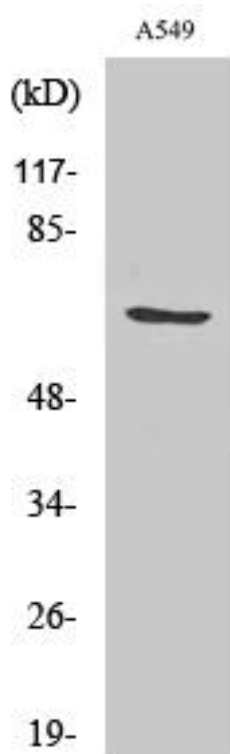
matters needing attention

Avoid repeated freezing and thawing!

Usage suggestions

This product can be used in immunological reaction related experiments. For more information, please consult technical personnel.

Products Images



Western Blot analysis of various cells using GCSc- γ Monoclonal Antibody