



FRS3 Monoclonal Antibody

Catalog No	BYmab-03878
Isotype	IgG
Reactivity	Human;Monkey
Applications	WB
Gene Name	FRS3
Protein Name	Fibroblast growth factor receptor substrate 3
Immunogen	The antiserum was produced against synthesized peptide derived from human FRS3. AA range:191-240
Specificity	FRS3 Monoclonal Antibody detects endogenous levels of FRS3 protein.
Formulation	Liquid in PBS containing 50% glycerol, 0.5% BSA and 0.02% sodium azide.
Source	Monoclonal, Mouse,IgG
Purification	The antibody was affinity-purified from mouse antiserum by affinity-chromatography using epitope-specific immunogen.
Dilution	WB 1:500-2000
Concentration	1 mg/ml
Purity	≥90%
Storage Stability	-20°C/1 year
Synonyms	FRS3; Fibroblast growth factor receptor substrate 3; FGFR substrate 3; FGFR-signaling adaptor SNT2; Suc1-associated neurotrophic factor target 2; SNT-2
Observed Band	54kD
Cell Pathway	Membrane; Lipid-anchor.
Tissue Specificity	Brain,Placenta,
Function	function:Adapter protein that links FGR and NGF receptors to downstream signaling pathways. Involved in the activation of MAP kinases. Down-regulates ERK2 signaling by interfering with the phosphorylation and nuclear translocation of ERK2.,PTM:Phosphorylated on tyrosine residues upon stimulation by BFGF or NGFB.,similarity:Contains 1 IRS-type PTB domain.,subunit:Binds NTRK1 (By similarity). Binds FGFR1, NGFR, GRB2, PTPN11 and ERK2.,
Background	This gene encodes a substrate for the fibroblast growth factor receptor. The encoded protein is found in the peripheral plasma membrane and links fibroblast

Nanjing BYabscience technology Co.,Ltd



growth factor receptor stimulation to activators of Ras. The encoded protein down-regulates extracellular regulated kinase 2 through direct binding. [provided by RefSeq, Jul 2013],

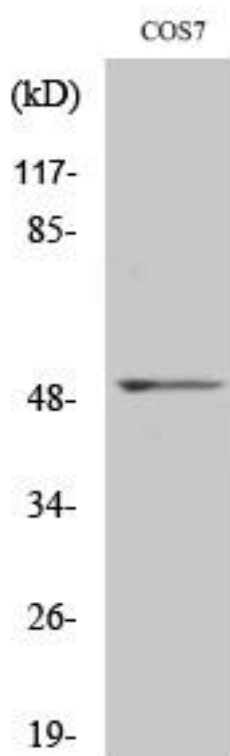
matters needing attention

Avoid repeated freezing and thawing!

Usage suggestions

This product can be used in immunological reaction related experiments. For more information, please consult technical personnel.

Products Images



Western Blot analysis of various cells using FRS3 Monoclonal Antibody