



# ERdj3 Monoclonal Antibody

Catalog No	BYmab-03863
Isotype	IgG
Reactivity	Human;Mouse;Rat
Applications	WB
Gene Name	DNAJB11
Protein Name	DnaJ homolog subfamily B member 11
Immunogen	The antiserum was produced against synthesized peptide derived from human DNAJB11. AA range:31-80
Specificity	ERdj3 Monoclonal Antibody detects endogenous levels of ERdj3 protein.
Formulation	Liquid in PBS containing 50% glycerol, 0.5% BSA and 0.02% sodium azide.
Source	Monoclonal, Mouse,IgG
Purification	The antibody was affinity-purified from mouse antiserum by affinity-chromatography using epitope-specific immunogen.
Dilution	WB 1:500-2000
Concentration	1 mg/ml
Purity	≥90%
Storage Stability	-20°C/1 year
Synonyms	DNAJB11; EDJ; ERJ3; HDJ9; PSEC0121; DnaJ homolog subfamily B member 11; APOBEC1-binding protein 2; ABBP-2; DnaJ protein homolog 9; ER-associated DNAJ; ER-associated Hsp40 co-chaperone; ER-associated dnaJ protein 3; ERdj3; ERj3p; HEDJ; Human
Observed Band	40kD
Cell Pathway	Endoplasmic reticulum lumen . Associated with the ER membrane in a C-terminally epitope-tagged construct.
Tissue Specificity	Widely expressed.
Function	caution:PubMed:11584023 reported a cytosolic, as well as nuclear subcellular location. This result was obtained using an N-terminally GFP-tagged construct which most probably affected signal peptide-driven targeting to the ER. As a consequence, the in vivo relevance of the observed interaction with APOBEC1, a nuclear protein, is dubious. This holds true for the interaction with PWP1.,function:Serves as a co-chaperone for HSPA5. Binds directly to both unfolded proteins that are substrates for ERAD and nascent unfolded peptide

Nanjing BYabscience technology Co.,Ltd



chains, but dissociates from the HSPA5-unfolded protein complex before folding is completed. May help recruiting HSPA5 and other chaperones to the substrate. Stimulates HSPA5 ATPase activity. induction: By ER stress-inducing agents, such as thapsigargin and tunicamycin. PTM: Contains high-mannose Endo H-sensitive carbohydrates. PTM: Cys-169, Cys-171, Cys-193 and Cys-196

#### Background

This gene encodes a soluble glycoprotein of the endoplasmic reticulum (ER) lumen that functions as a co-chaperone of binding immunoglobulin protein, a 70 kilodalton heat shock protein chaperone required for the proper folding and assembly of proteins in the ER. The encoded protein contains a highly conserved J domain of about 70 amino acids with a characteristic His-Pro-Asp (HPD) motif and may regulate the activity of binding immunoglobulin protein by stimulating ATPase activity. [provided by RefSeq, Mar 2014],

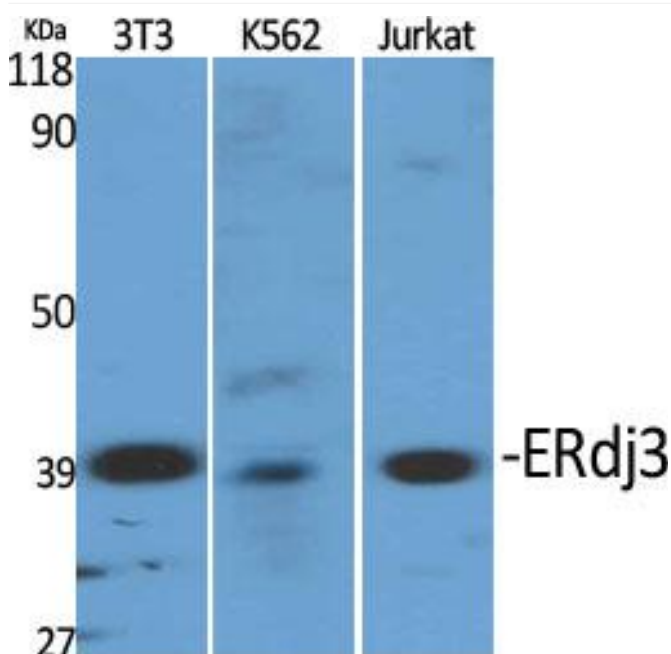
#### matters needing attention

Avoid repeated freezing and thawing!

#### Usage suggestions

This product can be used in immunological reaction related experiments. For more information, please consult technical personnel.

### Products Images



Western Blot analysis of various cells using ERdj3 Monoclonal Antibody

**Nanjing BYabs science technology Co.,Ltd**

网址: [www.njbybio.com](http://www.njbybio.com)

官方热线: 025-5229-8998

监督电话: 15950492658