



# Epsin 3 Monoclonal Antibody

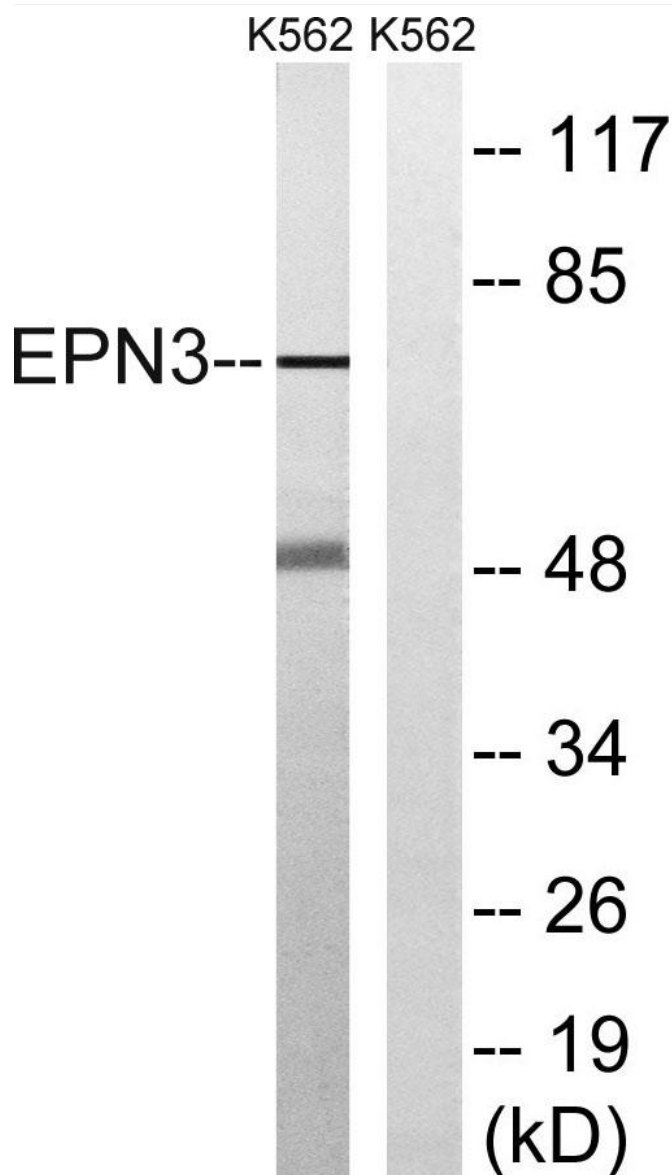
<b>Catalog No</b>	BYmab-03861
<b>Isotype</b>	IgG
<b>Reactivity</b>	Human;Rat;Mouse;
<b>Applications</b>	WB
<b>Gene Name</b>	EPN3
<b>Protein Name</b>	Epsin-3
<b>Immunogen</b>	The antiserum was produced against synthesized peptide derived from human EPN3. AA range:401-450
<b>Specificity</b>	Epsin 3 Monoclonal Antibody detects endogenous levels of Epsin 3 protein.
<b>Formulation</b>	Liquid in PBS containing 50% glycerol, 0.5% BSA and 0.02% sodium azide.
<b>Source</b>	Monoclonal, Mouse,IgG
<b>Purification</b>	The antibody was affinity-purified from mouse antiserum by affinity-chromatography using epitope-specific immunogen.
<b>Dilution</b>	WB 1:500-2000
<b>Concentration</b>	1 mg/ml
<b>Purity</b>	≥90%
<b>Storage Stability</b>	-20°C/1 year
<b>Synonyms</b>	EPN3; Epsin-3; EPS-15-interacting protein 3
<b>Observed Band</b>	68kD
<b>Cell Pathway</b>	Cytoplasm . Cytoplasm, perinuclear region . Cytoplasmic vesicle, clathrin-coated vesicle . Nucleus . Concentrated in the perinuclear region and associated with clathrin-coated vesicles close to the cell periphery. May shuttle to the nucleus.
<b>Tissue Specificity</b>	Detected in migrating keratinocytes from wounded skin, but not in differentiating keratinocytes or in normal skin. Detected in chronic wounds, basal cell carcinoma and ulcerative colitis.
<b>Function</b>	induction:In keratinocytes, by wounding or contact with collagen.,similarity:Belongs to the epsin family.,similarity:Contains 1 ENTH (epsin N-terminal homology) domain.,similarity:Contains 2 UIM (ubiquitin-interacting motif) repeats.,subcellular location:Concentrated in the perinuclear region and associated with clathrin-coated vesicles close to the cell periphery. May shuttle to the nucleus.,tissue specificity:Detected in migrating keratinocytes from wounded skin, but not in differentiating keratinocytes or in normal skin. Detected in chronic wounds, basal cell carcinoma and ulcerative colitis.,

**Nanjing BYabscience technology Co.,Ltd**



<b>Background</b>	induction:In keratinocytes, by wounding or contact with collagen.,similarity:Belongs to the epsin family.,similarity:Contains 1 ENTH (epsin N-terminal homology) domain.,similarity:Contains 2 UIM (ubiquitin-interacting motif) repeats.,subcellular location:Concentrated in the perinuclear region and associated with clathrin-coated vesicles close to the cell periphery. May shuttle to the nucleus.,tissue specificity:Detected in migrating keratinocytes from wounded skin, but not in differentiating keratinocytes or in normal skin. Detected in chronic wounds, basal cell carcinoma and ulcerative colitis.,
<b>matters needing attention</b>	Avoid repeated freezing and thawing!
<b>Usage suggestions</b>	This product can be used in immunological reaction related experiments. For more information, please consult technical personnel.

## Products Images



Nanjing BYabscience technology Co.,Ltd