



# Epsin 1 Monoclonal Antibody

<b>Catalog No</b>	BYmab-03859
<b>Isotype</b>	IgG
<b>Reactivity</b>	Human;Mouse;Rat
<b>Applications</b>	WB
<b>Gene Name</b>	EPN1
<b>Protein Name</b>	Epsin-1
<b>Immunogen</b>	Synthesized peptide derived from Epsin 1 . at AA range: 140-220
<b>Specificity</b>	Epsin 1 Monoclonal Antibody detects endogenous levels of Epsin 1 protein.
<b>Formulation</b>	Liquid in PBS containing 50% glycerol, 0.5% BSA and 0.02% sodium azide.
<b>Source</b>	Monoclonal, Mouse,IgG
<b>Purification</b>	The antibody was affinity-purified from mouse antiserum by affinity-chromatography using epitope-specific immunogen.
<b>Dilution</b>	WB 1:500-2000
<b>Concentration</b>	1 mg/ml
<b>Purity</b>	≥90%
<b>Storage Stability</b>	-20°C/1 year
<b>Synonyms</b>	EPN1; Epsin-1; EH domain-binding mitotic phosphoprotein; EPS-15-interacting protein 1
<b>Observed Band</b>	85kD
<b>Cell Pathway</b>	Cytoplasm . Cell membrane ; Peripheral membrane protein . Nucleus . Membrane, clathrin-coated pit . Associated with the cytoplasmic membrane at sites where clathrin-coated pits are forming. Colocalizes with clathrin and AP-2 in a punctate pattern on the plasma membrane. Detected in presynaptic nerve terminals and in Golgi stacks. May shuttle to the nucleus when associated with ZBTB16/ZNF145 (By similarity). .
<b>Tissue Specificity</b>	Brain,Epithelium,Mammary gland,
<b>Function</b>	domain:The DPW repeat domain is involved in AP2A2 and clathrin binding.,domain:The NPF repeat domain is involved in EPS15 binding.,function:Binds to membranes enriched in phosphatidylinositol-4,5-biphosphate (PtdIns(4,5)P2). Modifies membrane curvature and facilitates the formation of clathrin-coated invaginations (By similarity). Regulates receptor-mediated endocytosis.,online information:The bubble's bend -Issue 42 of January 2004,PTM:Phosphorylated on serine and/or

**Nanjing BYabscience technology Co.,Ltd**



threonine residues in mitotic cells. Phosphorylation reduces interaction with REPS2, AP-2 and the membrane fraction. Depolarization of synaptosomes results in dephosphorylation.,PTM:Ubiquitinated.,similarity:Belongs to the epsin family.,similarity:Contains 1 ENTH (epsin N-terminal homology) domain.,similarity:Contains 2 UIM (ubiquitin-interacting motif) repeats.,subcellular location:Associated with the cytoplasmic membrane

#### Background

This gene encodes a member of the epsin protein family. The encoded protein binds clathrin and is involved in the endocytosis of clathrin-coated vesicles. Loss of function of this gene is associated with reduced tumor growth and progression in certain cancer types. [provided by RefSeq, Mar 2016],

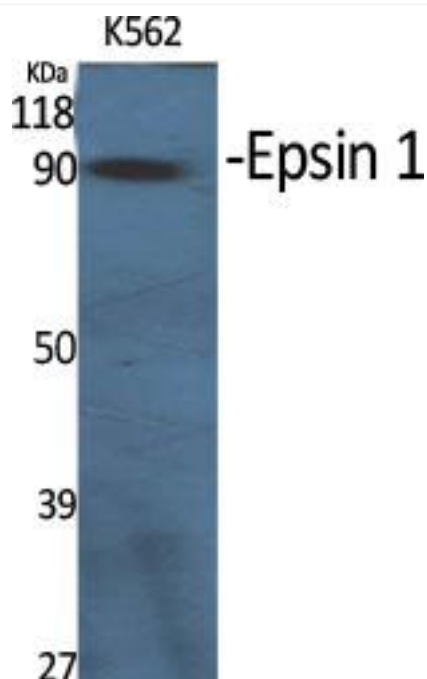
#### matters needing attention

Avoid repeated freezing and thawing!

#### Usage suggestions

This product can be used in immunological reaction related experiments. For more information, please consult technical personnel.

## Products Images



Western Blot analysis of various cells using Epsin 1 Monoclonal Antibody