



Eps8L1 Monoclonal Antibody

Catalog No	BYmab-03856
Isotype	IgG
Reactivity	Human;Mouse
Applications	WB
Gene Name	EPS8L1
Protein Name	Epidermal growth factor receptor kinase substrate 8-like protein 1
Immunogen	The antiserum was produced against synthesized peptide derived from human ES8L1. AA range:411-460
Specificity	Eps8L1 Monoclonal Antibody detects endogenous levels of Eps8L1 protein.
Formulation	Liquid in PBS containing 50% glycerol, 0.5% BSA and 0.02% sodium azide.
Source	Monoclonal, Mouse,IgG
Purification	The antibody was affinity-purified from mouse antiserum by affinity-chromatography using epitope-specific immunogen.
Dilution	WB 1:500-2000
Concentration	1 mg/ml
Purity	≥90%
Storage Stability	-20°C/1 year
Synonyms	EPS8L1; DRC3; EPS8R1; PP10566; Epidermal growth factor receptor kinase substrate 8-like protein 1; EPS8-like protein 1; Epidermal growth factor receptor pathway substrate 8-related protein 1; EPS8-related protein 1
Observed Band	80kD
Cell Pathway	Cytoplasm .
Tissue Specificity	Detected in placenta.
Function	function:Stimulates guanine exchange activity of SOS1. May play a role in membrane ruffling and remodeling of the actin cytoskeleton.,similarity:Belongs to the EPS8 family.,similarity:Contains 1 SH3 domain.,subunit:Interacts with ABI1. Part of a complex that contains SOS1, ABI1 and EPS8L2. Associates with F-actin.,tissue specificity:Detected in placenta.,
Background	This gene encodes a protein that is related to epidermal growth factor receptor pathway substrate 8 (EPS8), a substrate for the epidermal growth factor receptor. The function of this protein is unknown. At least two alternatively spliced transcript

Nanjing BYabscience technology Co.,Ltd



variants encoding different isoforms have been found for this gene. [provided by RefSeq, Jul 2008],

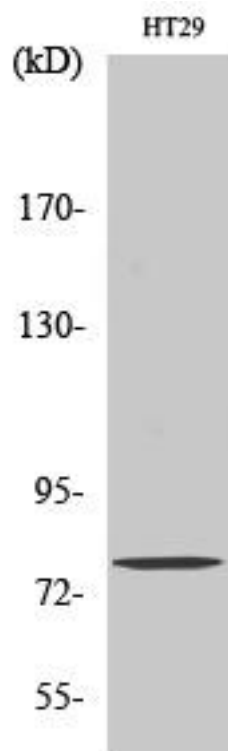
matters needing attention

Avoid repeated freezing and thawing!

Usage suggestions

This product can be used in immunological reaction related experiments. For more information, please consult technical personnel.

Products Images



Western Blot analysis of various cells using Eps8L1 Monoclonal Antibody

Nanjing BYabs science technology Co.,Ltd

网址: www.njbybio.com

官方热线: 025-5229-8998

监督电话: 15950492658