



Dok-4 Monoclonal Antibody

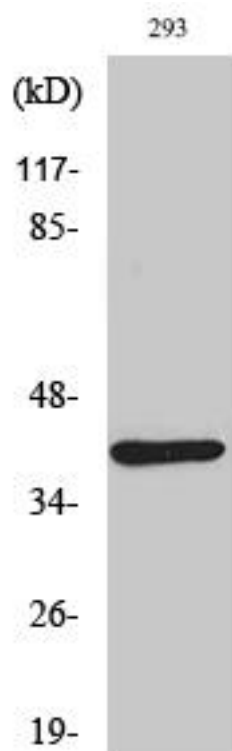
Catalog No	BYmab-03823
Isotype	IgG
Reactivity	Human;Mouse
Applications	WB
Gene Name	DOK4
Protein Name	Docking protein 4
Immunogen	The antiserum was produced against synthesized peptide derived from human DOK4. AA range:11-60
Specificity	Dok-4 Monoclonal Antibody detects endogenous levels of Dok-4 protein.
Formulation	Liquid in PBS containing 50% glycerol, 0.5% BSA and 0.02% sodium azide.
Source	Monoclonal, Mouse,IgG
Purification	The antibody was affinity-purified from mouse antiserum by affinity-chromatography using epitope-specific immunogen.
Dilution	WB 1:500-2000
Concentration	1 mg/ml
Purity	≥90%
Storage Stability	-20°C/1 year
Synonyms	DOK4; Docking protein 4; Downstream of tyrosine kinase 4; Insulin receptor substrate 5; IRS-5; IRS5
Observed Band	37kD
Cell Pathway	intracellular,
Tissue Specificity	Widely expressed. High expression in skeletal muscle, heart, kidney and liver. Weaker expression in spleen, lung and small intestine, brain, heart and. Expressed in both resting and activated peripheral blood T-cells.
Function	domain:PTB domain mediates receptor interaction.,function:DOK proteins are enzymatically inert adaptor or scaffolding proteins. They provide a docking platform for the assembly of multimolecular signaling complexes. DOK4 functions in RET-mediated neurite outgrowth and plays a positive role in activation of the MAP kinase pathway (By similarity). Putative link with downstream effectors of RET in neuronal differentiation. May be involved in the regulation of the immune response induced by T-cells.,PTM:Phosphorylated on tyrosine residues in response to insulin, IGF1 or RET stimulation.,similarity:Belongs to the DOK family. Type B subfamily.,similarity:Contains 1 IRS-type PTB

Nanjing BYabscience technology Co.,Ltd



	domain.,similarity:Contains 1 PH domain.,subunit:Interacts with RET and TEK/TIE2. Interaction with RET is mediated through the PTB domain and requires phosphorylation of RET 'Tyr-1062'.,tissue specificity:Widely express
Background	domain:PTB domain mediates receptor interaction.,function:DOK proteins are enzymatically inert adaptor or scaffolding proteins. They provide a docking platform for the assembly of multimolecular signaling complexes. DOK4 functions in RET-mediated neurite outgrowth and plays a positive role in activation of the MAP kinase pathway (By similarity). Putative link with downstream effectors of RET in neuronal differentiation. May be involved in the regulation of the immune response induced by T-cells.,PTM:Phosphorylated on tyrosine residues in response to insulin, IGF1 or RET stimulation.,similarity:Belongs to the DOK family. Type B subfamily.,similarity:Contains 1 IRS-type PTB domain.,similarity:Contains 1 PH domain.,subunit:Interacts with RET and TEK/TIE2. Interaction with RET is mediated through the PTB domain and requires phosphorylation of RET 'Tyr-1062'.,tissue specificity:Widely expressed. High expression in skeletal muscle, heart, kidney and liver. Weaker expression in spleen, lung and small intestine, brain, heart and. Expressed in both resting and activated peripheral blood T-cells.,
matters needing attention	Avoid repeated freezing and thawing!
Usage suggestions	This product can be used in immunological reaction related experiments. For more information, please consult technical personnel.

Products Images



Western Blot analysis of various cells using Dok-4 Monoclonal Antibody

Nanjing BYabscience technology Co.,Ltd

网址: www.njbybio.com

官方热线: 025-5229-8998

监督电话: 15950492658