



CYTL1 Monoclonal Antibody

Catalog No	BYmab-03810
Isotype	IgG
Reactivity	Human;Rat;Mouse;
Applications	WB
Gene Name	CYTL1
Protein Name	Cytokine-like protein 1
Immunogen	The antiserum was produced against synthesized peptide derived from human CYTL1. AA range:61-110
Specificity	CYTL1 Monoclonal Antibody detects endogenous levels of CYTL1 protein.
Formulation	Liquid in PBS containing 50% glycerol, 0.5% BSA and 0.02% sodium azide.
Source	Monoclonal, Mouse,IgG
Purification	The antibody was affinity-purified from mouse antiserum by affinity-chromatography using epitope-specific immunogen.
Dilution	WB 1:500-2000
Concentration	1 mg/ml
Purity	≥90%
Storage Stability	-20°C/1 year
Synonyms	CYTL1; C4orf4; Cytokine-like protein 1; Protein C17
Observed Band	16kD
Cell Pathway	Secreted .
Tissue Specificity	Specifically expressed in CD34+ hematopoietic cells.
Function	tissue specificity:Specifically expressed in CD34+ hematopoietic cells.,
Background	C17 is a cytokine-like protein specifically expressed in bone marrow and cord blood mononuclear cells that bear the CD34 (MIM 142230) surface marker (Liu et al., 2000 [PubMed 10857752]).[supplied by OMIM, Mar 2008],
matters needing attention	Avoid repeated freezing and thawing!

Nanjing BYabscience technology Co.,Ltd

网址: www.njbybio.com

官方热线: 025-5229-8998

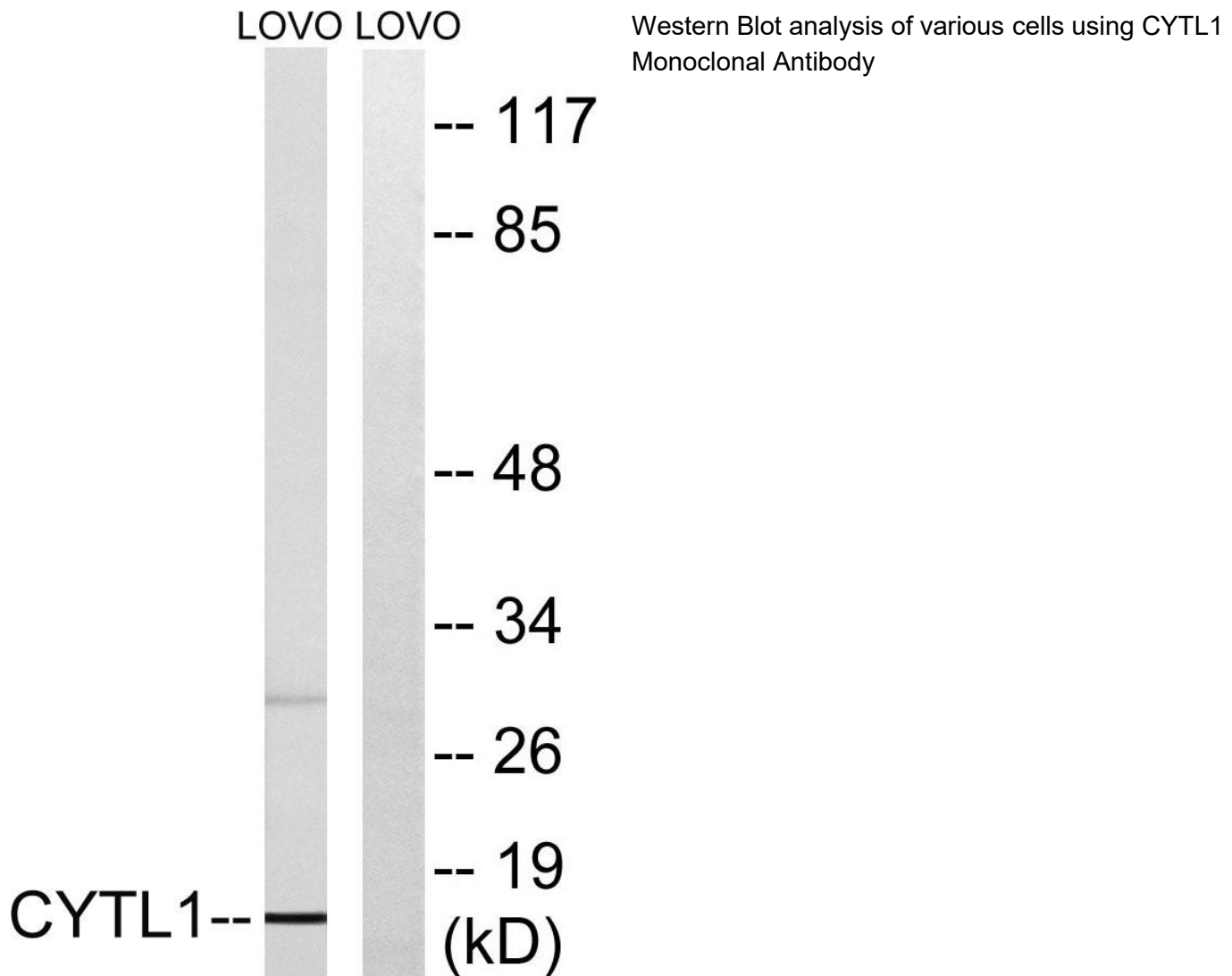
监督电话: 15950492658



Usage suggestions

This product can be used in immunological reaction related experiments. For more information, please consult technical personnel.

Products Images



Nanjing BYabscience technology Co.,Ltd

网址: www.njbybio.com

官方热线: 025-5229-8998

监督电话: 15950492658