



CPZ Monoclonal Antibody

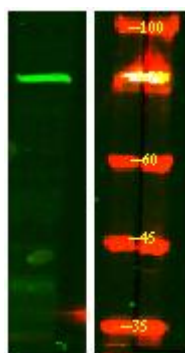
Catalog No	BYmab-03792
Isotype	IgG
Reactivity	Human;Rat
Applications	WB
Gene Name	CPZ
Protein Name	Carboxypeptidase Z
Immunogen	Synthesized peptide derived from CPZ . at AA range: 330-410
Specificity	CPZ Monoclonal Antibody detects endogenous levels of CPZ protein.
Formulation	Liquid in PBS containing 50% glycerol, 0.5% BSA and 0.02% sodium azide.
Source	Monoclonal, Mouse,IgG
Purification	The antibody was affinity-purified from mouse antiserum by affinity-chromatography using epitope-specific immunogen.
Dilution	WB 1:500-2000
Concentration	1 mg/ml
Purity	≥90%
Storage Stability	-20°C/1 year
Synonyms	CPZ; Carboxypeptidase Z; CPZ
Observed Band	73kD
Cell Pathway	Secreted, extracellular space, extracellular matrix .
Tissue Specificity	In placenta, it is present within invasive trophoblasts and in the surrounding extracellular space. Also present in amnion cells, but is not readily apparent in the extracellular matrix of this cell type. Present in normal pituitary gland and neoplastic pituitary gland (especially POMC-, GH- and PRL-producing adenomas) (at protein level). Widely expressed.
Function	cofactor: Binds 1 zinc ion per subunit.,enzyme regulation: Inhibited by 2-mercaptomethyl-3-guanidinoethylthiopropionic acid (MGTA) and guanidinoethylmercaptosuccinic acid (GEMSA). Inhibited by chelating agents such as EDTA and EGTA.,function: Cleaves substrates with C-terminal arginine residues. Probably modulates the Wnt signaling pathway, by cleaving some undefined protein. May play a role in cleavage during prohormone processing.,similarity: Belongs to the peptidase M14 family.,similarity: Contains 1 FZ (frizzled) domain.,tissue specificity: In placenta, it is present within invasive trophoblasts and in the surrounding extracellular space. Also present in amnion

Nanjing BYabs science technology Co.,Ltd



	cells, but is not readily apparent in the extracellular matrix of this cell type. Present in normal pituitary gland and neoplastic pituitary gland (especially POMC-, GH- and PRL-producing adenomas) (at protein level). Widely express
Background	carboxypeptidase Z(CPZ) Homo sapiens This gene encodes a member of the metalloproteinase family. This enzyme displays carboxypeptidase activity towards substrates with basic C-terminal residues. It is most active at neutral pH and is inhibited by active site-directed inhibitors of metalloproteinases. Alternative splicing in the coding region results in multiple transcript variants encoding different isoforms. [provided by RefSeq, Jul 2008],
matters needing attention	Avoid repeated freezing and thawing!
Usage suggestions	This product can be used in immunological reaction related experiments. For more information, please consult technical personnel.

Products Images



Western Blot analysis of various cells using CPZ Monoclonal Antibody