



CPI-17 Monoclonal Antibody

Catalog No	BYmab-03786
Isotype	IgG
Reactivity	Human;Mouse;Rat
Applications	WB
Gene Name	PPP1R14A
Protein Name	Protein phosphatase 1 regulatory subunit 14A
Immunogen	The antiserum was produced against synthesized peptide derived from human CPI17 alpha. AA range:5-54
Specificity	CPI-17 Monoclonal Antibody detects endogenous levels of CPI-17 protein.
Formulation	Liquid in PBS containing 50% glycerol, 0.5% BSA and 0.02% sodium azide.
Source	Monoclonal, Mouse,IgG
Purification	The antibody was affinity-purified from mouse antiserum by affinity-chromatography using epitope-specific immunogen.
Dilution	WB 1:500-2000
Concentration	1 mg/ml
Purity	≥90%
Storage Stability	-20°C/1 year
Synonyms	PPP1R14A; CPI17; PPP1INL; Protein phosphatase 1 regulatory subunit 14A; 17 kDa PKC-potentiated inhibitory protein of PP1; Protein kinase C-potentiated inhibitor protein of 17 kDa; CPI-17
Observed Band	22kD
Cell Pathway	Cytoplasm .
Tissue Specificity	Isoform 1 is detected in aorta and testis. Isoform 2 is detected in aorta.
Function	function:Inhibitor of PPP1CA. Has over 1000-fold higher inhibitory activity when phosphorylated, creating a molecular switch for regulating the phosphorylation status of PPP1CA substrates and smooth muscle contraction.,similarity:Belongs to the PP1 inhibitor family.,tissue specificity:Isoform 1 is detected in aorta and testis. Isoform 2 is detected in aorta.,
Background	The protein encoded by this gene belongs to the protein phosphatase 1 (PP1) inhibitor family. This protein is an inhibitor of smooth muscle myosin phosphatase, and has higher inhibitory activity when phosphorylated. Inhibition of myosin

Nanjing BYabscience technology Co.,Ltd



phosphatase leads to increased myosin phosphorylation and enhanced smooth muscle contraction. Alternatively spliced transcript variants encoding different isoforms have been noted for this gene. [provided by RefSeq, Sep 2011],

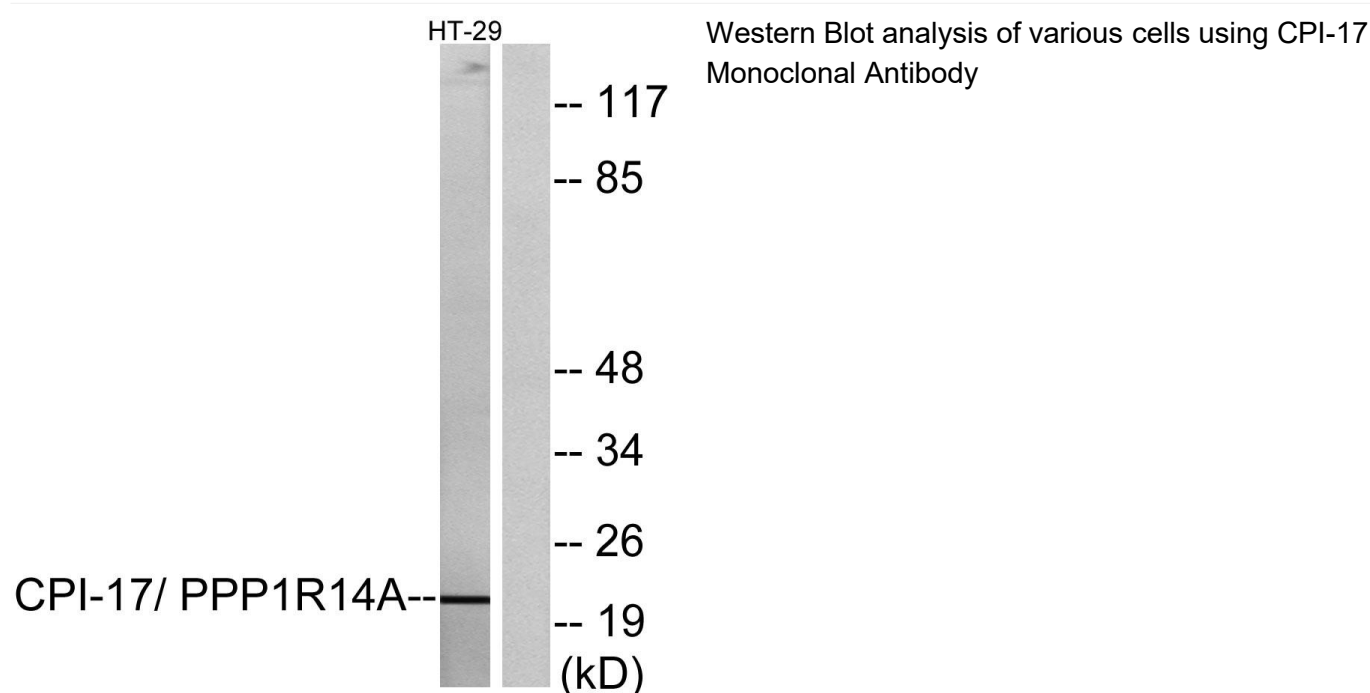
matters needing attention

Avoid repeated freezing and thawing!

Usage suggestions

This product can be used in immunological reaction related experiments. For more information, please consult technical personnel.

Products Images



Nanjing BYabs science technology Co.,Ltd