



CNPase Monoclonal Antibody

Catalog No	BYmab-03780
Isotype	IgG
Reactivity	Human;Mouse;Rat
Applications	WB
Gene Name	CNP
Protein Name	2',3'-cyclic-nucleotide 3'-phosphodiesterase
Immunogen	The antiserum was produced against synthesized peptide derived from human CNPase. AA range:59-108
Specificity	CNPase Monoclonal Antibody detects endogenous levels of CNPase protein.
Formulation	Liquid in PBS containing 50% glycerol, 0.5% BSA and 0.02% sodium azide.
Source	Monoclonal, Mouse,IgG
Purification	The antibody was affinity-purified from mouse antiserum by affinity-chromatography using epitope-specific immunogen.
Dilution	WB 1:500-2000
Concentration	1 mg/ml
Purity	≥90%
Storage Stability	-20°C/1 year
Synonyms	CNP; 2'; 3'-cyclic-nucleotide 3'-phosphodiesterase; CNP; CNPase
Observed Band	47kD
Cell Pathway	Membrane ; Lipid-anchor . Melanosome . Firmly bound to membrane structures of brain white matter. .
Tissue Specificity	Brain,Skin,
Function	catalytic activity:Nucleoside 2',3'-cyclic phosphate + H(2)O = nucleoside 2'-phosphate.,similarity:Belongs to the cyclic nucleotide phosphodiesterase family.,subcellular location:Firmly bound to membrane structures of brain white matter. Identified by mass spectrometry in melanosome fractions from stage I to stage IV.,
Background	catalytic activity:Nucleoside 2',3'-cyclic phosphate + H(2)O = nucleoside 2'-phosphate.,similarity:Belongs to the cyclic nucleotide phosphodiesterase family.,subcellular location:Firmly bound to membrane structures of brain white matter. Identified by mass spectrometry in melanosome fractions from stage I to stage IV.,

Nanjing BYabscience technology Co.,Ltd



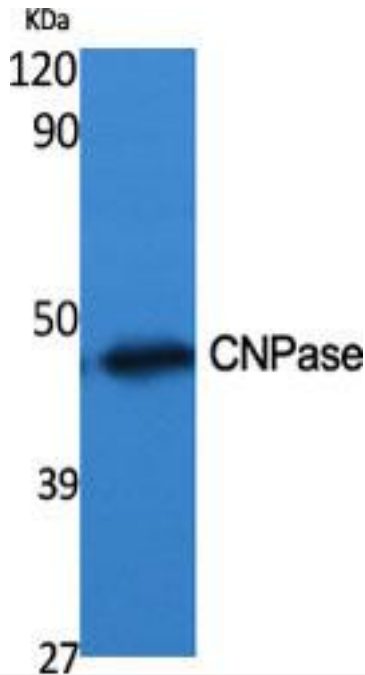
matters needing attention

Avoid repeated freezing and thawing!

Usage suggestions

This product can be used in immunological reaction related experiments. For more information, please consult technical personnel.

Products Images



Western Blot analysis of various cells using CNPase Monoclonal Antibody