



CHST13 Monoclonal Antibody

Catalog No	BYmab-03771
Isotype	IgG
Reactivity	Human;Rat;Mouse;
Applications	WB
Gene Name	CHST13
Protein Name	Carbohydrate sulfotransferase 13
Immunogen	The antiserum was produced against synthesized peptide derived from human CHST13. AA range:211-260
Specificity	CHST13 Monoclonal Antibody detects endogenous levels of CHST13 protein.
Formulation	Liquid in PBS containing 50% glycerol, 0.5% BSA and 0.02% sodium azide.
Source	Monoclonal, Mouse,IgG
Purification	The antibody was affinity-purified from mouse antiserum by affinity-chromatography using epitope-specific immunogen.
Dilution	WB 1:500-2000
Concentration	1 mg/ml
Purity	≥90%
Storage Stability	-20°C/1 year
Synonyms	CHST13; Carbohydrate sulfotransferase 13; Chondroitin 4-O-sulfotransferase 3; Chondroitin 4-sulfotransferase 3; C4ST-3; C4ST3
Observed Band	39kD
Cell Pathway	Golgi apparatus membrane ; Single-pass type II membrane protein .
Tissue Specificity	Highly expressed in adult liver. Expressed at lower level in kidney, lymph nodes and fetal kidney.
Function	catalytic activity:3'-phosphoadenylyl sulfate + chondroitin = adenosine 3',5'-bisphosphate + chondroitin 4'-sulfate.,function:Catalyzes the transfer of sulfate to position 4 of the N-acetylgalactosamine (GalNAc) residue of chondroitin. Chondroitin sulfate constitutes the predominant proteoglycan present in cartilage and is distributed on the surfaces of many cells and extracellular matrices. Transfers sulfate to the C4 hydroxyl of beta1,4-linked GalNAc that is substituted with a beta-linked glucuronic acid at the C-3 hydroxyl. No activity toward dermatan.,similarity:Belongs to the sulfotransferase 2 family.,tissue specificity:Highly expressed in adult liver. Expressed at lower level in kidney, lymph nodes and fetal kidney.,

Nanjing BYabscience technology Co.,Ltd



Background

The protein encoded by this gene belongs to the sulfotransferase 2 family. It is localized to the golgi membrane, and catalyzes the transfer of sulfate to the C4 hydroxyl of beta-1,4-linked N-acetylgalactosamine (GalNAc) flanked by glucuronic acid residue in chondroitin. Chondroitin sulfate constitutes the predominant proteoglycan present in cartilage and is distributed on the surfaces of many cells and extracellular matrices. [provided by RefSeq, Aug 2011],

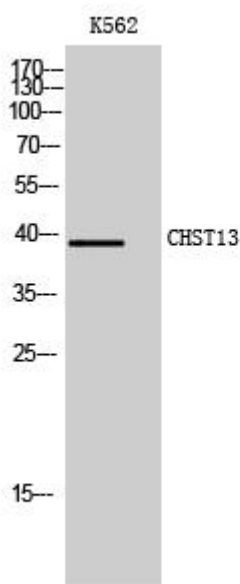
matters needing attention

Avoid repeated freezing and thawing!

Usage suggestions

This product can be used in immunological reaction related experiments. For more information, please consult technical personnel.

Products Images



Western Blot analysis of various cells using CHST13 Monoclonal Antibody