



Cep97 Monoclonal Antibody

Catalog No	BYmab-03767
Isotype	IgG
Reactivity	Human;Mouse
Applications	WB
Gene Name	CEP97
Protein Name	Centrosomal protein of 97 kDa
Immunogen	The antiserum was produced against synthesized peptide derived from human CEP97. AA range:581-630
Specificity	Cep97 Monoclonal Antibody detects endogenous levels of Cep97 protein.
Formulation	Liquid in PBS containing 50% glycerol, 0.5% BSA and 0.02% sodium azide.
Source	Monoclonal, Mouse,IgG
Purification	The antibody was affinity-purified from mouse antiserum by affinity-chromatography using epitope-specific immunogen.
Dilution	WB 1:500-2000
Concentration	1 mg/ml
Purity	≥90%
Storage Stability	-20°C/1 year
Synonyms	CEP97; LRRIQ2; Centrosomal protein of 97 kDa; Cep97; Leucine-rich repeat and IQ domain-containing protein 2
Observed Band	97kD
Cell Pathway	Cytoplasm, cytoskeleton, microtubule organizing center, centrosome . Cytoplasm, cytoskeleton, microtubule organizing center, centrosome, centriole . Recruited at the distal end of the mother centriole by MPHOSPH9. .
Tissue Specificity	Lung,Skin,Testis,
Function	function:Collaborates with cep110, being involved in the suppression of a cilia assembly program. Required for correct spindle formation and has a role in cytokinesis. Required for recruitment of cep110 to the centrosome.,PTM:Phosphorylated upon DNA damage, probably by ATM or ATR.,similarity:Contains 1 IQ domain.,similarity:Contains 6 LRR (leucine-rich) repeats.,subunit:Interacts with CALM1 and CEP110.,
Background	function:Collaborates with cep110, being involved in the suppression of a cilia assembly program. Required for correct spindle formation and has a role in

Nanjing BYabscience technology Co.,Ltd



cytokinesis. Required for recruitment of cep110 to the centrosome.,PTM:Phosphorylated upon DNA damage, probably by ATM or ATR.,similarity:Contains 1 IQ domain.,similarity:Contains 6 LRR (leucine-rich) repeats.,subunit:Interacts with CALM1 and CEP110.,

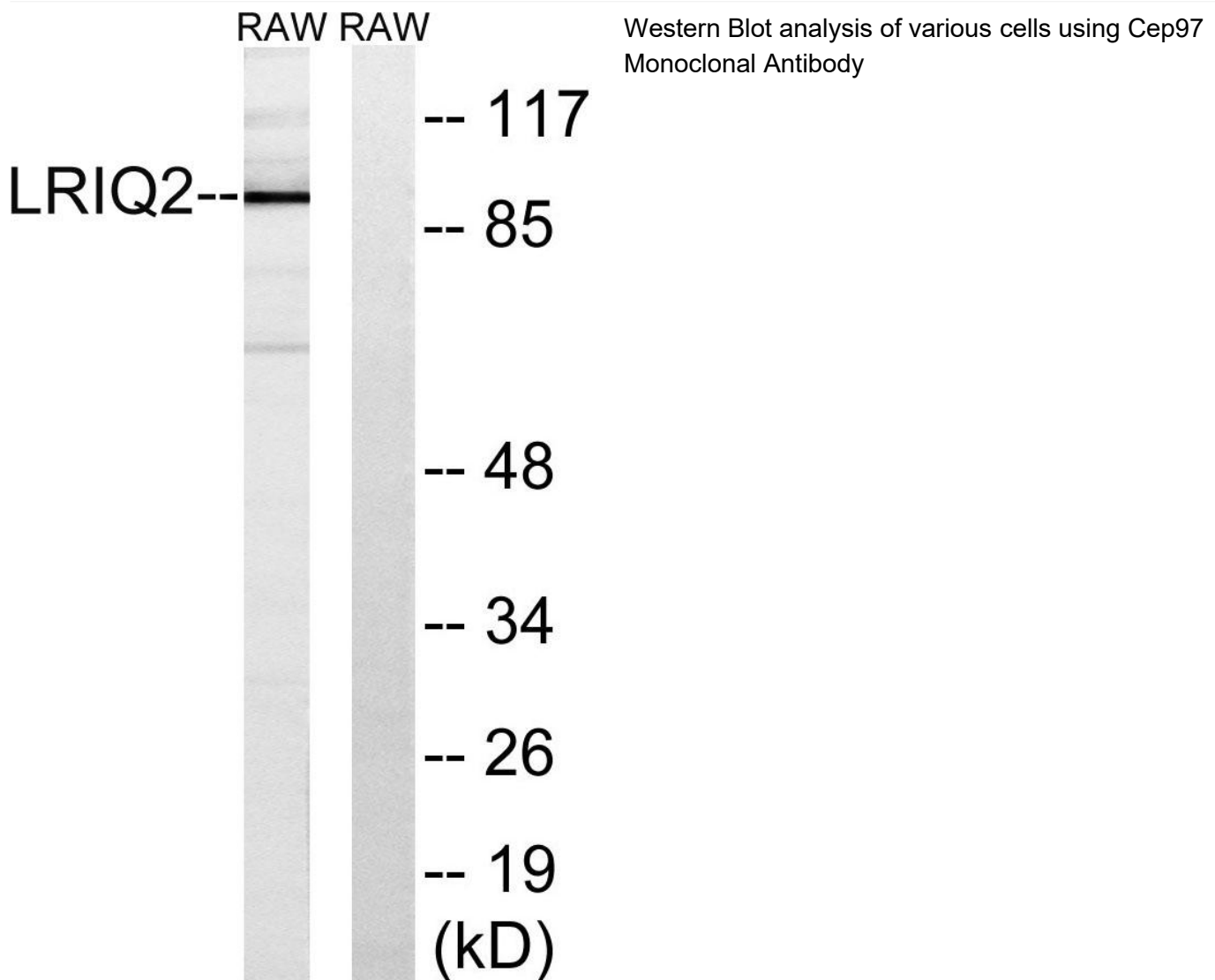
matters needing attention

Avoid repeated freezing and thawing!

Usage suggestions

This product can be used in immunological reaction related experiments. For more information, please consult technical personnel.

Products Images



Nanjing BYabs science technology Co.,Ltd

网址: www.njbybio.com

官方热线: 025-5229-8998

监督电话: 15950492658