



CEP152 Monoclonal Antibody

| | |
|---------------------------|---|
| Catalog No | BYmab-03757 |
| Isotype | IgG |
| Reactivity | Human;Mouse |
| Applications | WB |
| Gene Name | CEP152 |
| Protein Name | Centrosomal protein of 152 kDa |
| Immunogen | The antiserum was produced against synthesized peptide derived from human CEP152. AA range:841-890 |
| Specificity | CEP152 Monoclonal Antibody detects endogenous levels of CEP152 protein. |
| Formulation | Liquid in PBS containing 50% glycerol, 0.5% BSA and 0.02% sodium azide. |
| Source | Monoclonal, Mouse,IgG |
| Purification | The antibody was affinity-purified from mouse antiserum by affinity-chromatography using epitope-specific immunogen. |
| Dilution | WB 1:500-2000 |
| Concentration | 1 mg/ml |
| Purity | ≥90% |
| Storage Stability | -20°C/1 year |
| Synonyms | CEP152; KIAA0912; Centrosomal protein of 152 kDa; Cep152 |
| Observed Band | 140kD |
| Cell Pathway | Cytoplasm, cytoskeleton, microtubule organizing center, centrosome . Cytoplasm, cytoskeleton, microtubule organizing center, centrosome, centriole . Colocalizes with CDK5RAP2, WDR62 and CEP63 in a discrete ring around the proximal end of the parental centriole. At this site, a cohesive structure is predicted to engage parental centrioles and procentrioles (PubMed:21983783, PubMed:26297806). Localizes to the deuterosome (By similarity). Localizes to pericentriolar material (PCM) (PubMed:26337392). . |
| Tissue Specificity | Bladder,Brain,Heart,Lung,Testis, |
| Function | sequence caution:Contaminating sequence. Potential poly-A sequence., |
| Background | centrosomal protein 152(CEP152) Homo sapiens This gene encodes a protein that is thought to be involved with centrosome function. Mutations in this gene have been associated with primary microcephaly (MCPH4). Alternative |

Nanjing BYabscience technology Co.,Ltd



splicing results in multiple transcript variants. [provided by RefSeq, Aug 2010],

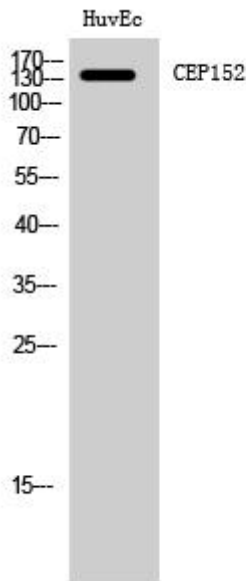
matters needing attention

Avoid repeated freezing and thawing!

Usage suggestions

This product can be used in immunological reaction related experiments. For more information, please consult technical personnel.

Products Images



Western Blot analysis of various cells using CEP152 Monoclonal Antibody

Nanjing BYabs science technology Co.,Ltd

网址: www.njbybio.com

官方热线: 025-5229-8998

监督电话: 15950492658